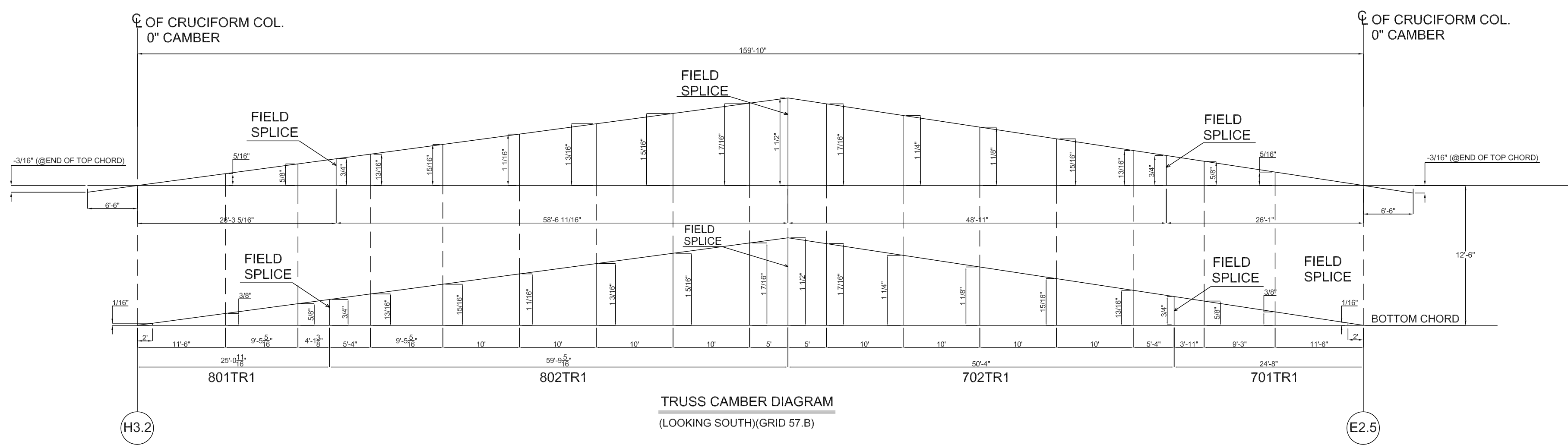


ONE - TRUSS - 701TR1

W 22 3/8" x 3 1/16
 F 17 7/8" x 4 15/1
 K 0'-6 3/16"

SHOP NOTE:
 LIFTING WEIGHT IS 18 TONS

SEQ # : 7



NOTE:-
 READ DRAWING IN CONJUNCTION WITH DRG. NO.(S) 701A & 701C

NOTE:-
 FOR REFERENCE DWG SEE. No(s):-E701

REV.	DATE	DESCRIPTION
O	07/03/2015	For Fabrication
A	06/24/2015	For Approval

HOLES U.N. 15/160	SHOP BOLTS U.N. 7/80 A325	FIELD BOLTS U.N. 7/80 A325	WELD U.N. E70xx LOHY
SURFACE PREP SSPC-SP6		COATING SHERWIN WILLIAMS ZINC CLAD III	
PROJECT			DATE 06/24/2015
			DRAWN BY NA
DESCRIPTION TRUSS DETAILS GRID 57.B			CHKD. BY NR
ARCH. CORGAN	ENG. WALTER P MOORE		JOB NO.
CUSTOMER			SHT. NO. 701B

