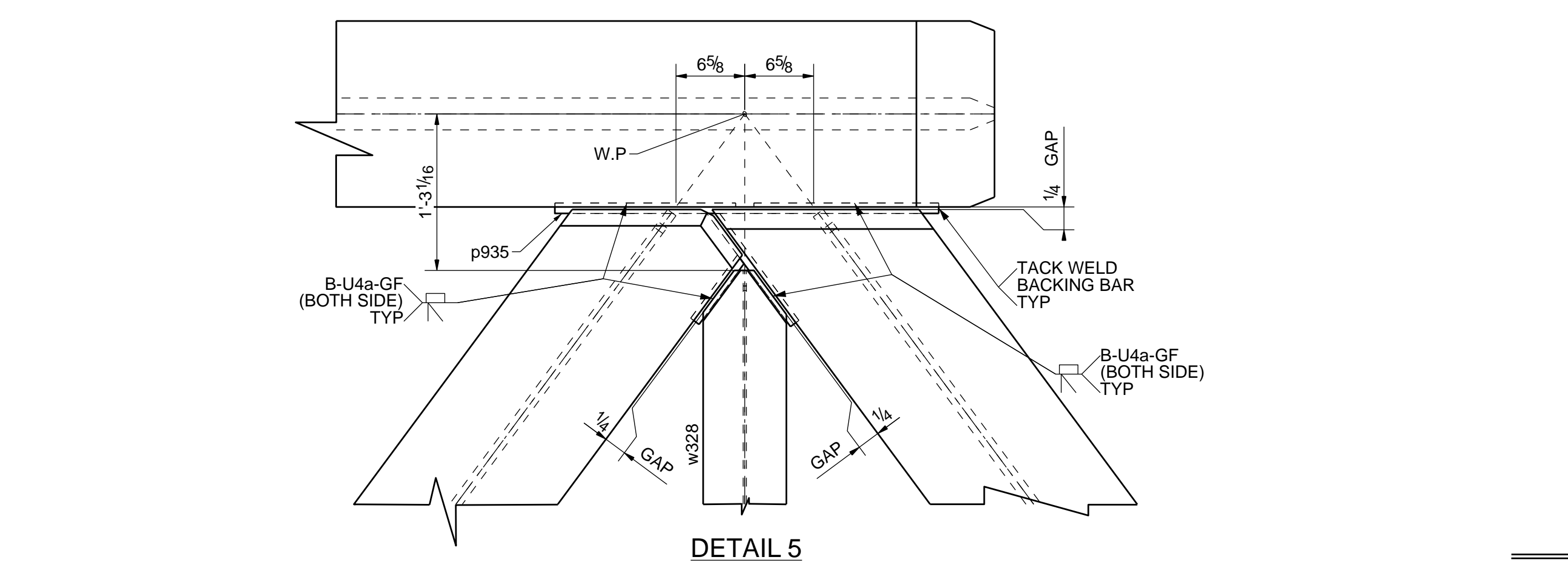
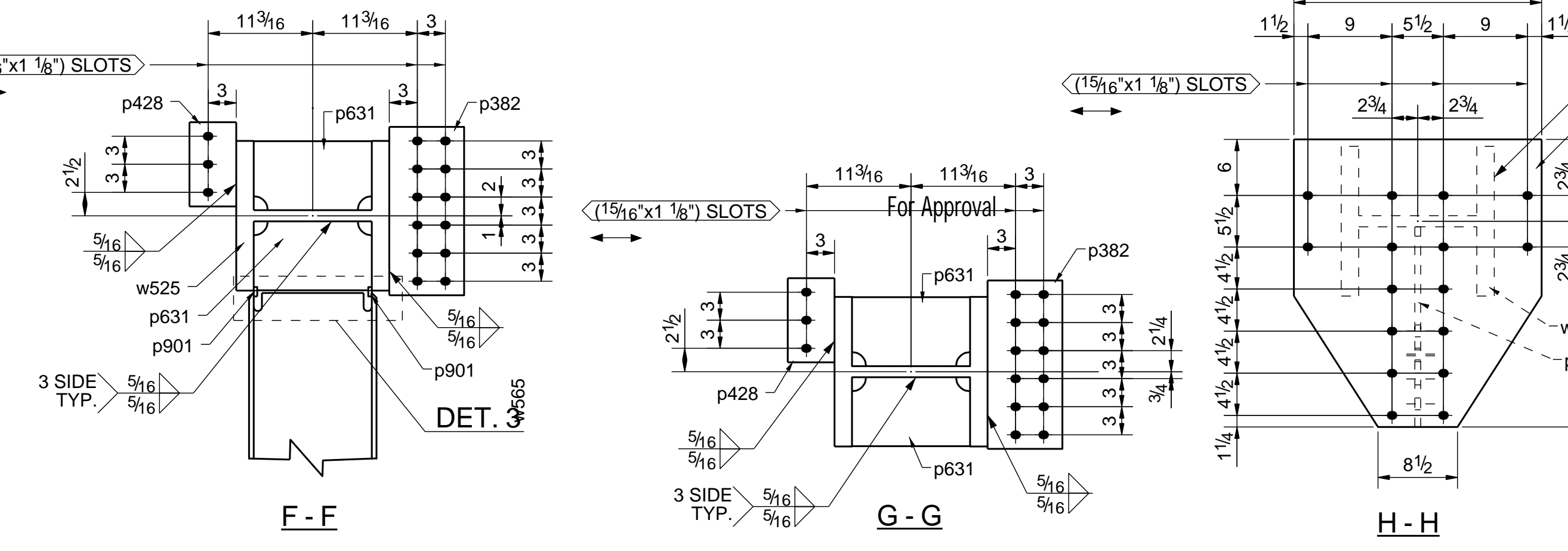
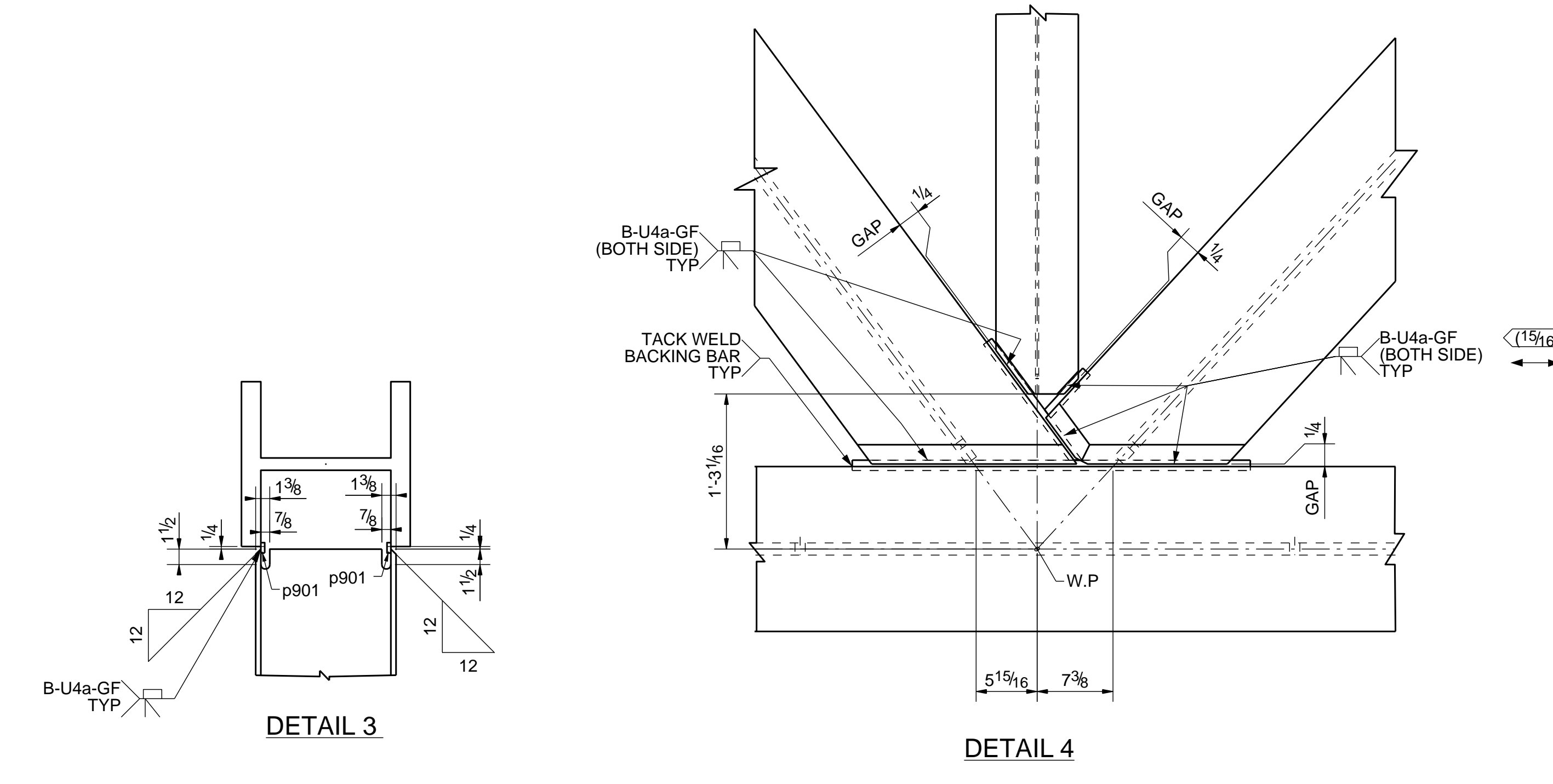
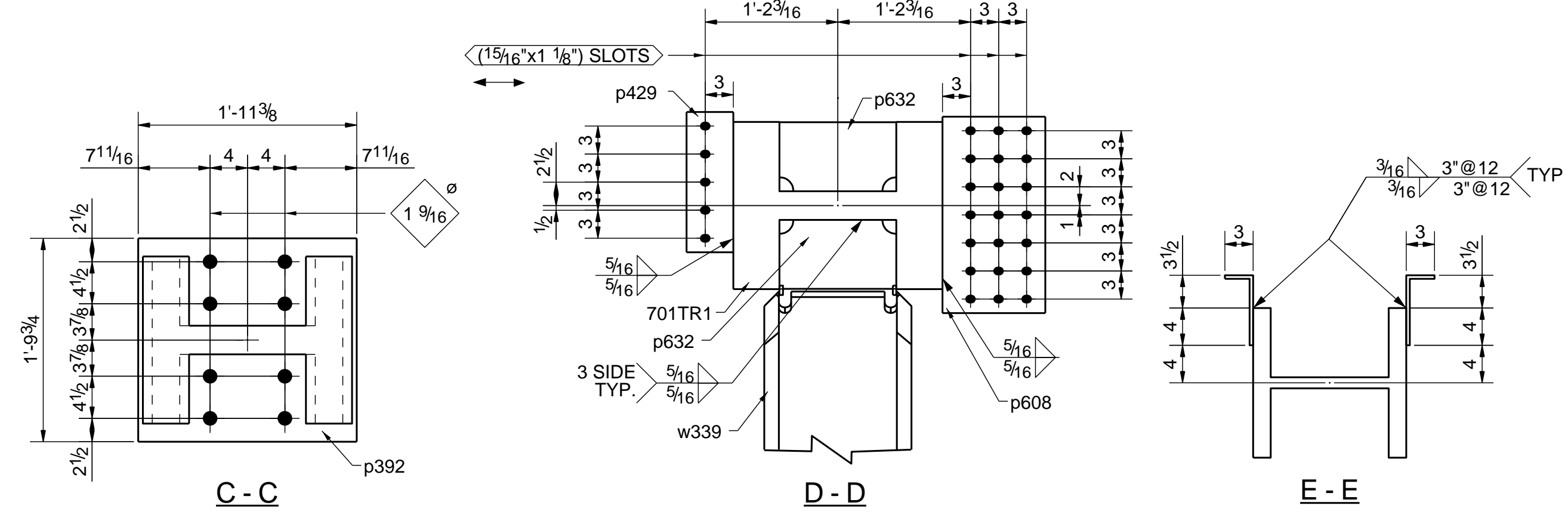
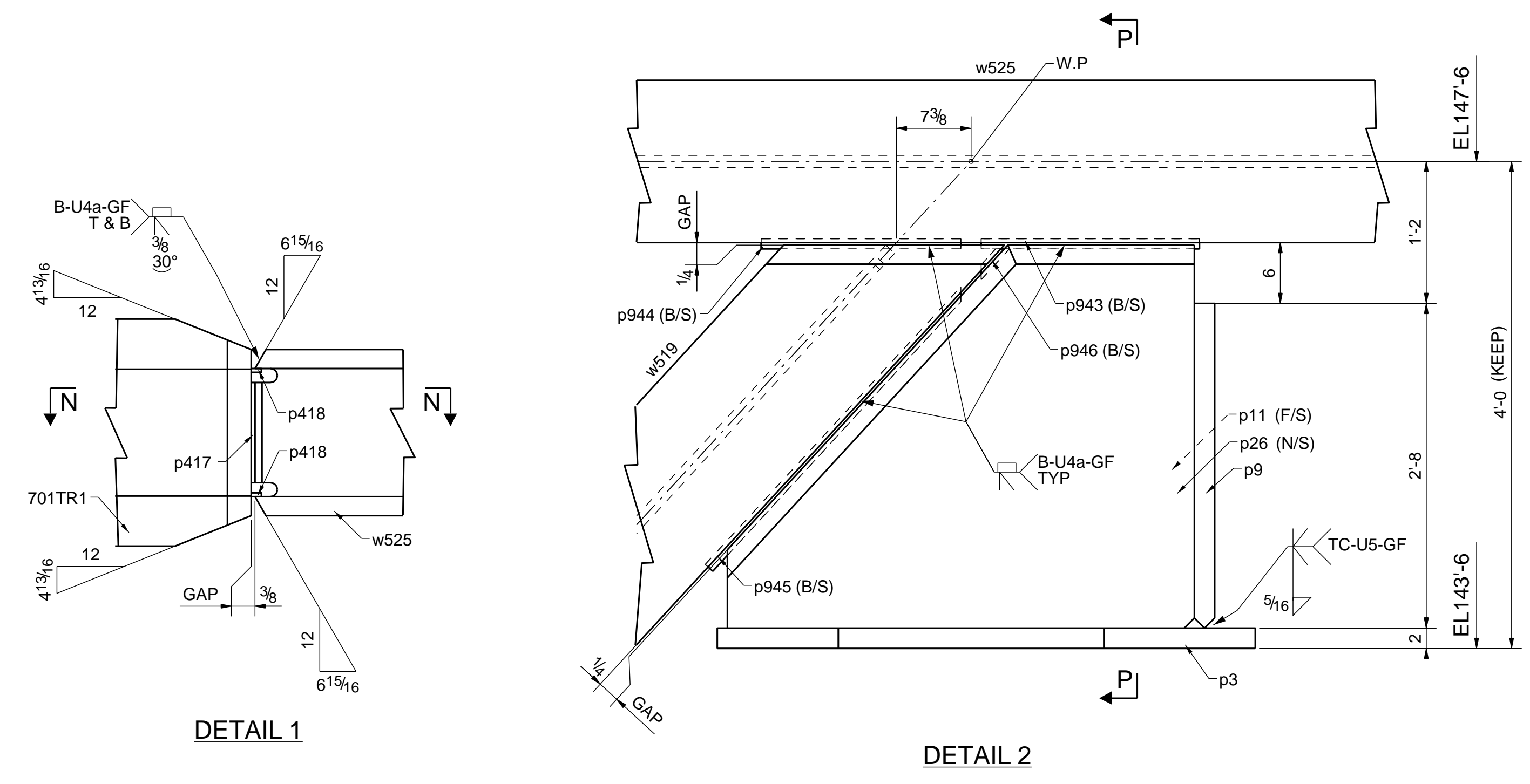


BILL OF MATERIAL							
SHIP MARK	PIECE MARK	QTY	DESCRIPTION	LENGTH	REMARKS	WEIGHT Lbs	MILL ORDER
701TR1	1	W14X730	7'-2"	A992	SIE	5243.8	116-29
	bn72	1	BPL3/8"x9 3/4"	4'-9 1/2"	A36	BENT	62.0
	bn73	1	BPL3/8"x9 3/4"	5'-0 1/8"	A36	BENT	64.8
	bn74	1	BPL3/8"x9 3/4"	6'-4 1/2"	A36	BENT	81.1
	bn75	1	BPL3/8"x9 3/4"	4'-8"	A36	BENT	60.4
	bn76	1	BPL3/8"x9 3/4"	5'-1 1/4"	A36	BENT	66.1
	bn77	1	BPL3/8"x9 3/4"	6'-8 1/2"	A36	BENT	86.7
	bn78	1	BPL3/8"x9 3/4"	6'-11 1/8"	A36	BENT	89.5
	bn79	1	BPL3/8"x9 3/4"	4'-9 7/16"	A36	BENT	59.7
	bn80	1	BPL3/8"x9 3/4"	4'-11 11/16"	A36	BENT	62.2
	bn91	1	BPL3/8"x9 3/4"	0'-10 9/16"	A36	BENT	10.9
	bn92	1	BPL3/8"x9 3/4"	1'-0 13/16"	A36	BENT	13.3
	bn117	1	BPL3/8"x8 11/16"	0'-9 3/4"	A36	BENT	8.7
	bn118	1	BPL3/8"x8 11/16"	0'-9 3/4"	A36	BENT	8.7
	bn125	1	BPL3/8"x9 3/4"	6'-4 1/2"	A36	BENT	81.1
	m48	31	STD. 3/4 DIA	0'-10"	A36		1.5
	p3	1	PL2"x5"	4'-8"	A572-GR 50		1476.5
	p6	1	PL2"x12 5/8"	3'-9 3/8"	A572-GR 50		323.0
	p7	2	PL2"x4"	4'-6"	A572-GR 50		735.1
	p8	2	PL2"x13 1/16"	4'-6"	A572-GR 50		412.8
	p9	1	PL2"x4"	2'-8"	A572-GR 50		428.8
	p10	4	PL2"x6"	1'-1 13/16"	A36		46.4
	p11	1	PL1 7/8"x3 3/4"	3'-10"	A36		673.1
	p26	1	PL1 7/8"x3 3/4"	3'-10"	A36		673.1
	p270	1	PL2"x18"	1'-6 3/8"	A36		187.6
	p382	2	FL3/8"x8"	1'-9 1/2"	A572-GR 50		25.5
	p392	2	FL3/8"x3 3/4"	1'-11 3/8"	A572-GR 50		288.4
	p417	2	FL3/8"x1"	0'-9 7/8"	A36		1.1
	p418	2	FL3/8"x1"	1'-4"	A36		1.7
	p428	2	FL1/2"x5"	0'-9"	A36		6.4
	p429	1	FL1/2"x5"	1'-3"	A36		10.6
	p507	1	PL3/4"x26 1/2"	2'-6 3/4"	A572-GR 50		146.5
	p511	1	PL3/8"x14"	1'-9 7/16"	A572-GR 50		49.2
	p605	1	PL2"x7 3/8"	1'-0 5/8"	A572-GR 50		50.8
	p608	1	FL1"x11"	1'-9"	A572-GR 50		65.5
	p631	4	PL3/4"x7 3/8"	1'-0 5/8"	A572-GR 50		19.1
	p632	2	PL3/4"x7 3/8"	1'-0 1/2"	A572-GR 50		18.9
	p736	2	FL3/8"x4 1/2"	0'-7 5/8"	A36		3.2
	p737	1	FL3/8"x4 1/2"	1'-0 7/8"	A36		5.7
	p738	1	FL3/8"x4 1/2"	1'-0 7/8"	A36		5.7
	p739	1	PL3/8"x3 9/16"	1'-0 7/8"	A36		4.5
	p740	1	PL3/8"x3 9/16"	0'-8 3/8"	A36		2.8
	p893	2	FL3/8"x1"	0'-9"	A36		1.0
	p901	2	FL3/8"x1"	0'-9"	A36		0.9
	p935	2	FL3/8"x1"	3'-0 7/8"	A36		3.9
	p938	2	FL3/8"x1"	1'-1 9/16"	A36		1.4
	p939	2	FL3/8"x1"	0'-7 9/16"	A36		0.8
	p940	2	FL3/8"x1"	3'-2 5/8"	A36		4.1
	p941	2	FL3/8"x1"	1'-2 11/16"	A36		1.5
	p942	2	FL3/8"x1"	0'-5 11/16"	A36		0.6
	p943	2	FL3/8"x1"	1'-9 1/2"	A36		2.3
	p944	2	FL3/8"x1"	1'-7 11/16"	A36		2.1
	p945	2	FL3/8"x1"	3'-1 3/16"	A36		3.9
	p946	2	FL3/8"x1"	0'-4 1/8"	A36		0.3
	w58	1	W14X257	14'-8 15/16"	A992		3793.6
	w61	1	W14X257	22'-5 1/2"	A992	SIE	5778.1
	w328	1	W14X43	10'-6 11/16"	A992		452.8
	w339	1	W14X211	6'-11 5/16"	A992		1465.1
	w519	1	W14X257	15'-10 11/16"	A992		4088.5
	w525	1	W14X257	25'-1 9/16"	A992	SIE	6464.9
	w565	1	W14X43	10'-6 11/16"	A992		452.8
TOTAL WEIGHT FOR 1 ASSEMBLY						35448.9	



ONE - TRUSS - 701TR1

W | 22 3/8" x 3 1/16
 F | 17 7/8" x 4 15/16
 K | 0'-6 3/16"

NOTE:-
 READ DRAWING IN CONJUNCTION WITH
 DRG. NO.(s) 701B & 701C

NOTE:-
 FOR REFERENCE DWG SEE.
 No(s):-E701

SEQ # : 7

O	07/03/2015	For Fabrication
A	06/24/2015	
REV.	DATE	DESCRIPTION
HOLES U.N.	SHOP BOLTS U.N.	FIELD BOLTS U.N.
15/160	7/80 A325	7/80 A325
WELD U.N.		E70xx LOHY
SURFACE PREP		COATING
SSPC-SP6		SHERWIN WILLIAMS ZINC CLAD III
PROJECT		DATE
		06/24/2015
		DRAWN BY
		NA
DESCRIPTION		CHKD. BY
TRUSS DETAILS GRID 57.B		NR
ARCH.	ENG.	JOB NO.
CORGAN	WALTER P MOORE	
CUSTOMER		SHT. NO.
		701A