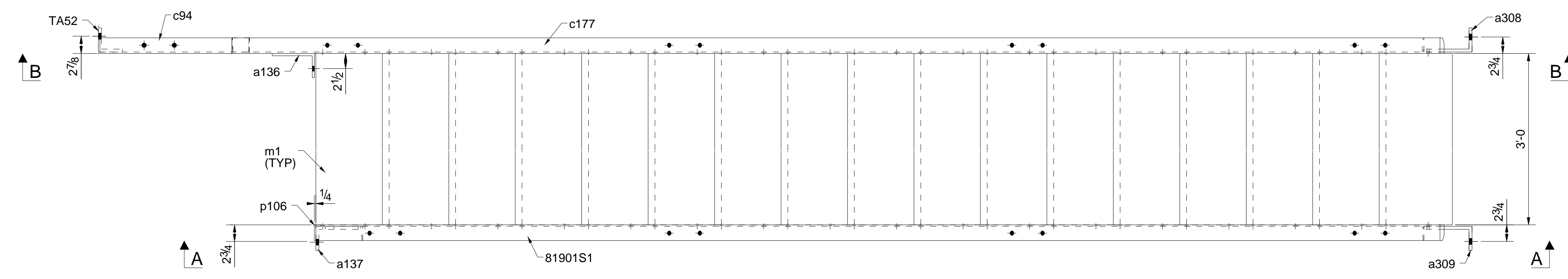
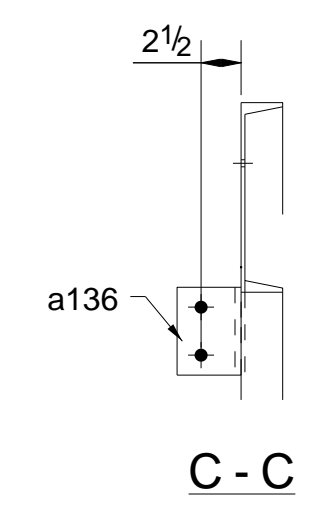
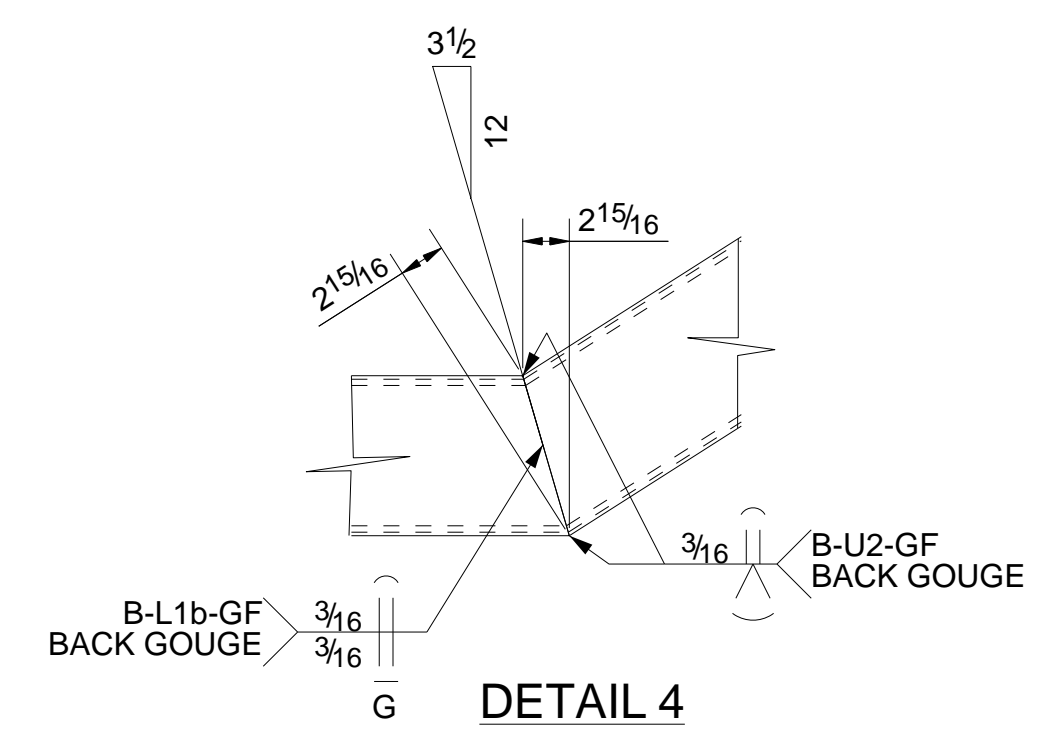
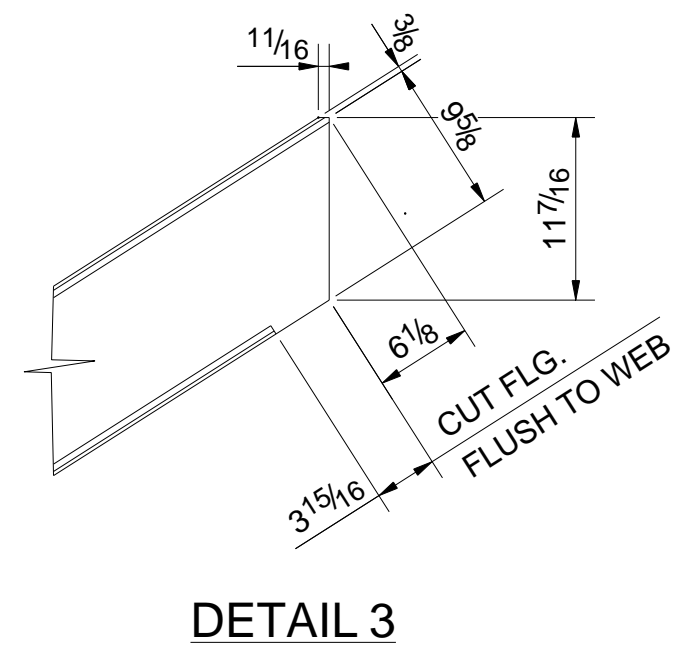
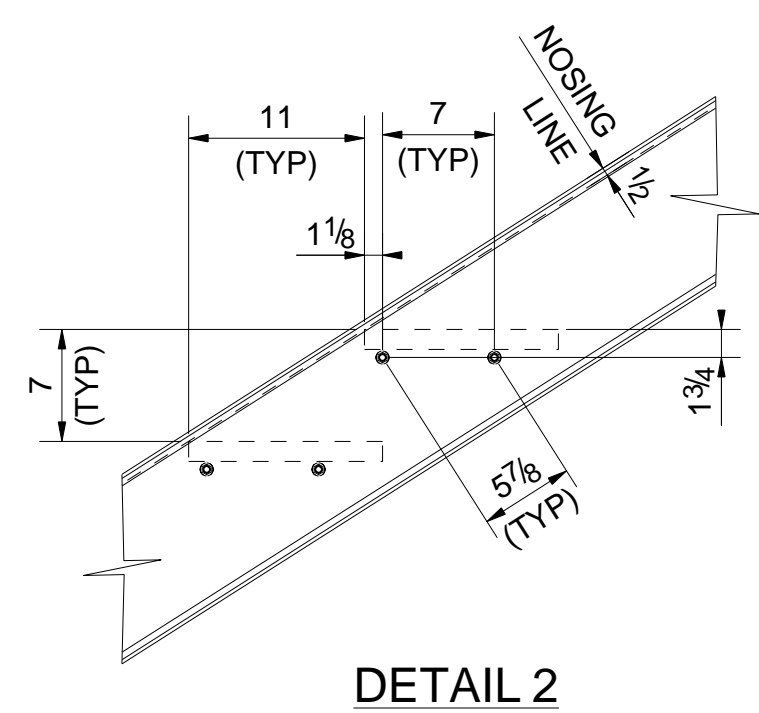
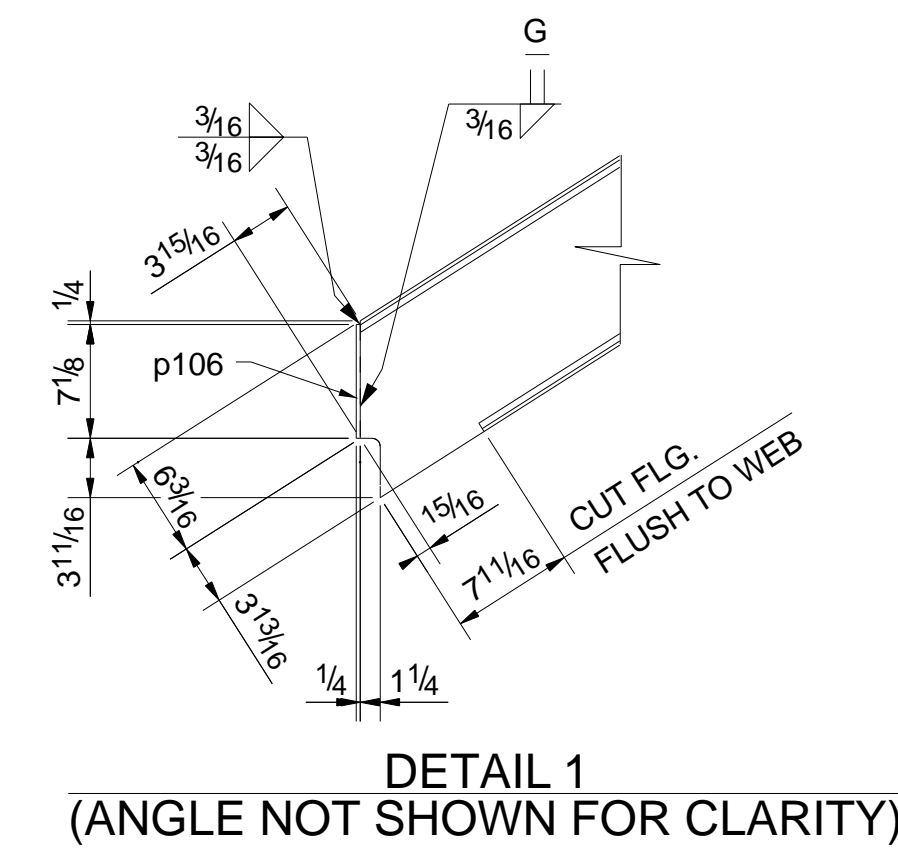


SHPG. SEQUENCES		BILL OF MATERIAL									
81	MARK	NO. PCS	DESCRIPTION	LENGTH		FAB. MARK	P.M.	PREP	NOTES	PAY CODE	
				FT.	IN.						
1	81901S1	1	C10X15.3	18	10"				B2E A36	51	
		1	L4X4X1/2	0	5 1/2"	TA52			A529		
		1	L7X4X3/8	0	5 1/2"	a136			A529		
		1	L7X4X1/2	1	0"	a137			A529		
		1	L8X4X1/2	0	6"	a308			A529		
		1	L8X4X1/2	0	6"	a309			A529		
		1	C10X15.3	2	0 3/4"	c94			B1E A36		
		1	C10X15.3	20	0 1/2"	c177			B2E A36		
		17	GRTG. TRDS. 1"1/4X12"1/8	3	0	m1					
		1	PL1/4"X2.5/8"	0	7 1/8"	p106			A36		
		66	3/8" DIAA307	0	1 1/4"	mab			w/1-N81-W		
		2	3/8" DIAA307	0	1 3/4"	mad			w/1-N81-W		



ONE - STAIR - 81901S1

SEQ	QTY
81M	1

SHOP NOTE:
ASSEMBLE ALL
PIECES AFTER
GALVANIZING

SHOP NOTE:-
ALL JOINTS TO BE SEAL
WELDED WITH CONTINUOUS
1/8" FILLET OR BUTT WELDED AS REQ'D.

REV.	DESCRIPTION	DATE

FOR APPROVAL: 01/22/2015

FOR FABRICATION:
FOR FABRICATION:

GENERAL NOTES

MATERIAL: WF & WT's: A992	HOLES: 13/16Ø (U.N)	ALL RUNNING DIMENSIONS FROM END OF MAIN MATERIAL ALL VERTICAL SPACING OF HOLES TO BE 3" UNLESS NOTED. ALL RE-ENTRANT CUTS RADIUS (R=1/2" MIN). ALL BEAMS TO BE FABRICATED WITH RESIDUAL CAMBER UP. ALL H.S. SHOP BOLTS TO BE TORQUED UNLESS NOTED. S.T. INDICATES "SNUG TIGHT". ERECTION DWG. NO. E81902
ALL OTHER: A36 (U.N)	ELECTRODES: E70XX	
SURFACE PREP: SSPC-SP8 AND PAINT:		

DESCRIPTION: STAIR DETAILS	DRAWN BY	DATE
	AK	01/19/2015
JOB:	CHKD. BY	DATE
	DK	01/19/2015
CUSTOMER:	JOB NUMBER	
DRAWING NUMBER		REV.

NOTE:-
READ THIS DRAWING IN CONJUNCTION WITH
DRG.NO. 81901B & 81901C

