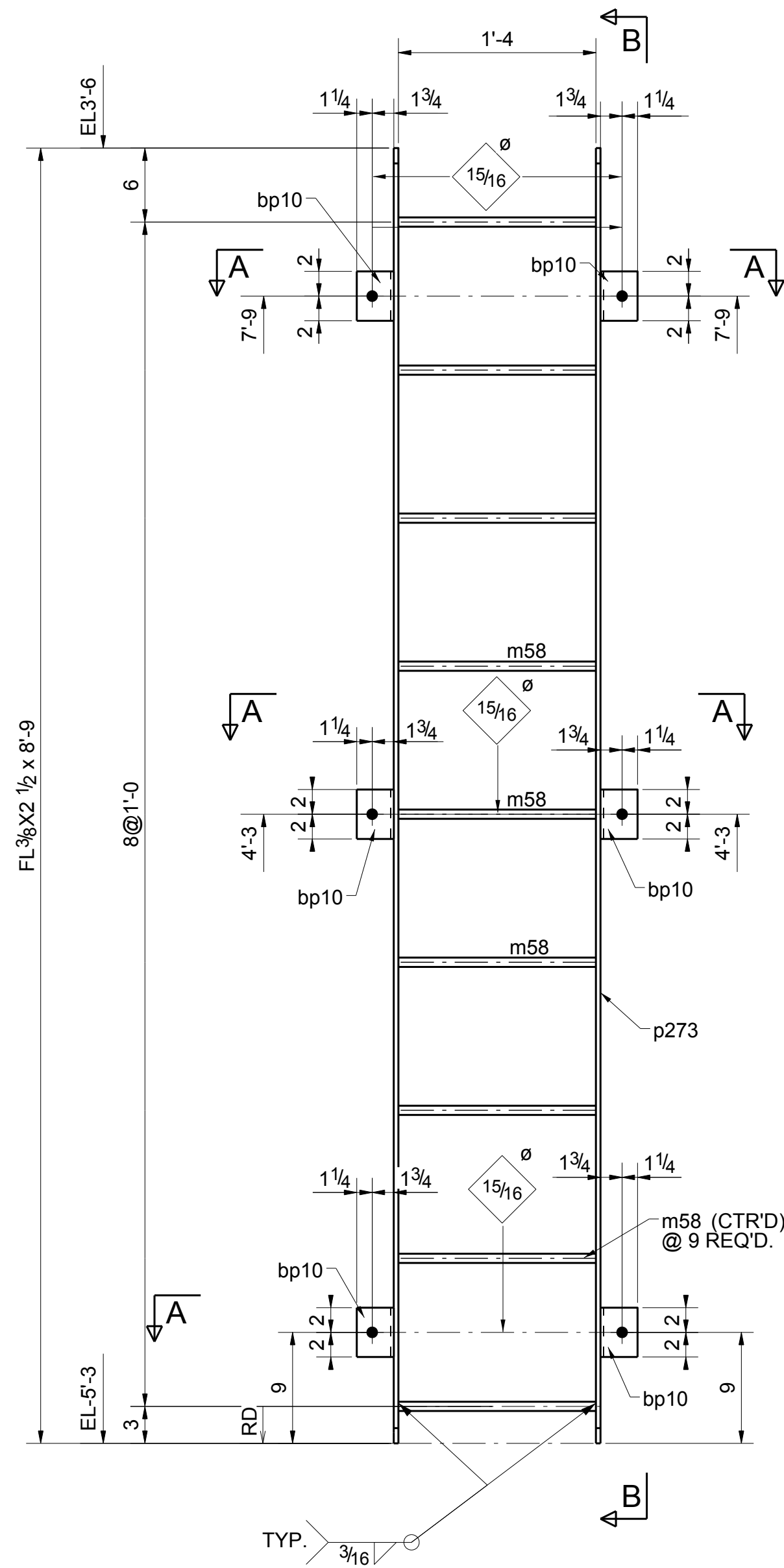


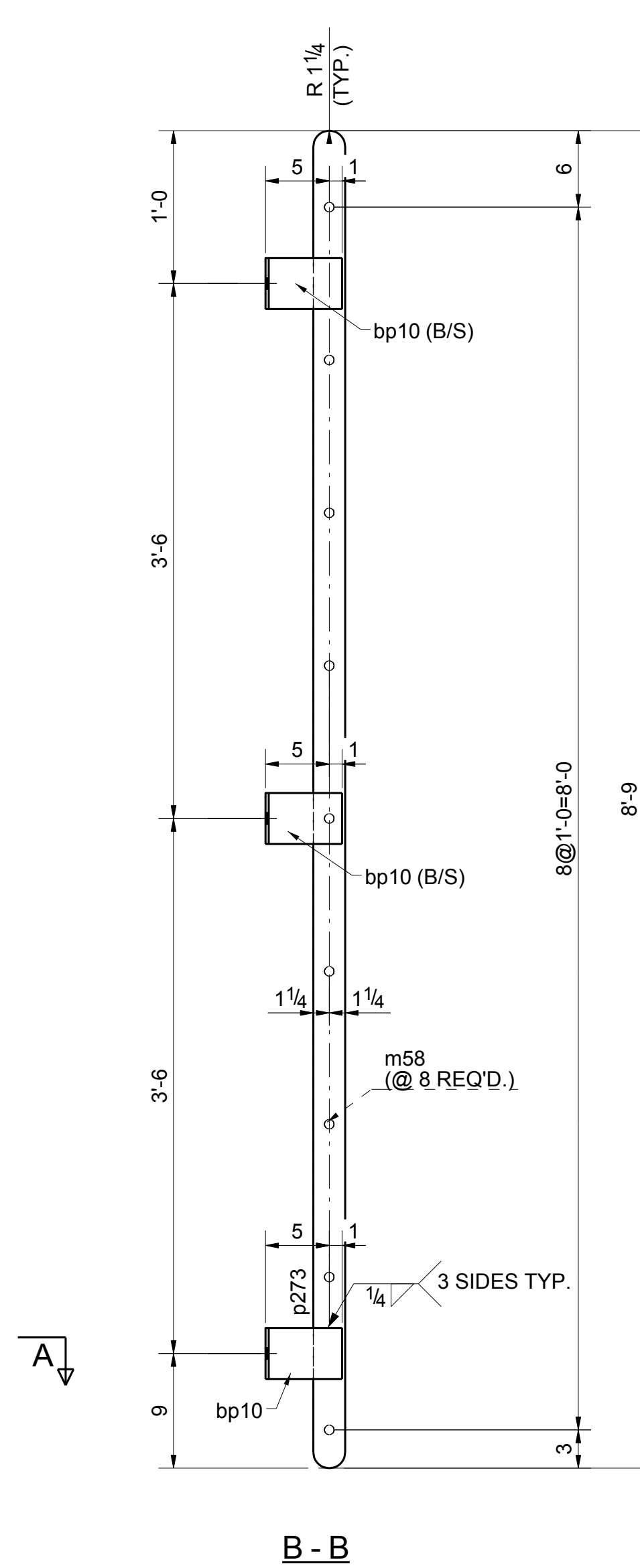
BILL OF MATERIAL

Total weight : 87

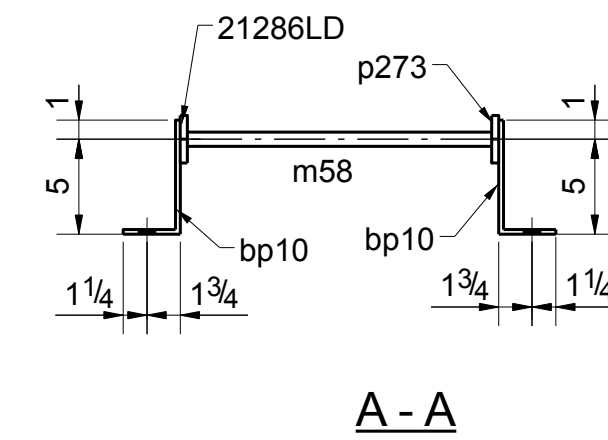
Seq #s	Seq Qty	Qty Total	Piece Mark	Description	Length	Steel Grade	Remarks	Advance Mill #
21M	1	1	21286LD	FL3/8"X2 1/2"	8'-9"	A36		
		6	bp10	FL1/4"X4"	0'-8 1/2"	A36	BENT	
		9	m58	ROD3/4"	1'-4"	A36	SLIPNOT COATING	
		1	p273	FL3/8"X2 1/2"	8'-9"	A36		
				Shop Bolts				



ONE - LADDER - 21286LD



B - B



A - A

REF ERECTION : ME21011



Shop Notes:

- Holes (UNO): 13/16Ø
- Connection Type (UNO): SNUG TIGHT
- Bolts (UNO): 3/4Ø A325N
- Shop Primer (UNO): 1-S/C STD Primer
- Surface Preparation (UNO): SSPC-SP3
- Tolerance (UNO): 1/16"

Project	SAGANING EAGLES LANDING CASINO		
Location	2690 WORTH ROAD STANDISH, MI 48658		
Architect	JCJ ARCHITECTURE		
Purchaser	SPENCE BROTHERS		
Title	LADDER DETAIL		
REV	DATE #	BY	REVISION
0	04/23/2018	PR	For Fabrication
A	01/03/2018	PR	For Approval
Drawn By	NHA	Chkd By	NR
Job No.	17-1-164	Sheet No.	21286