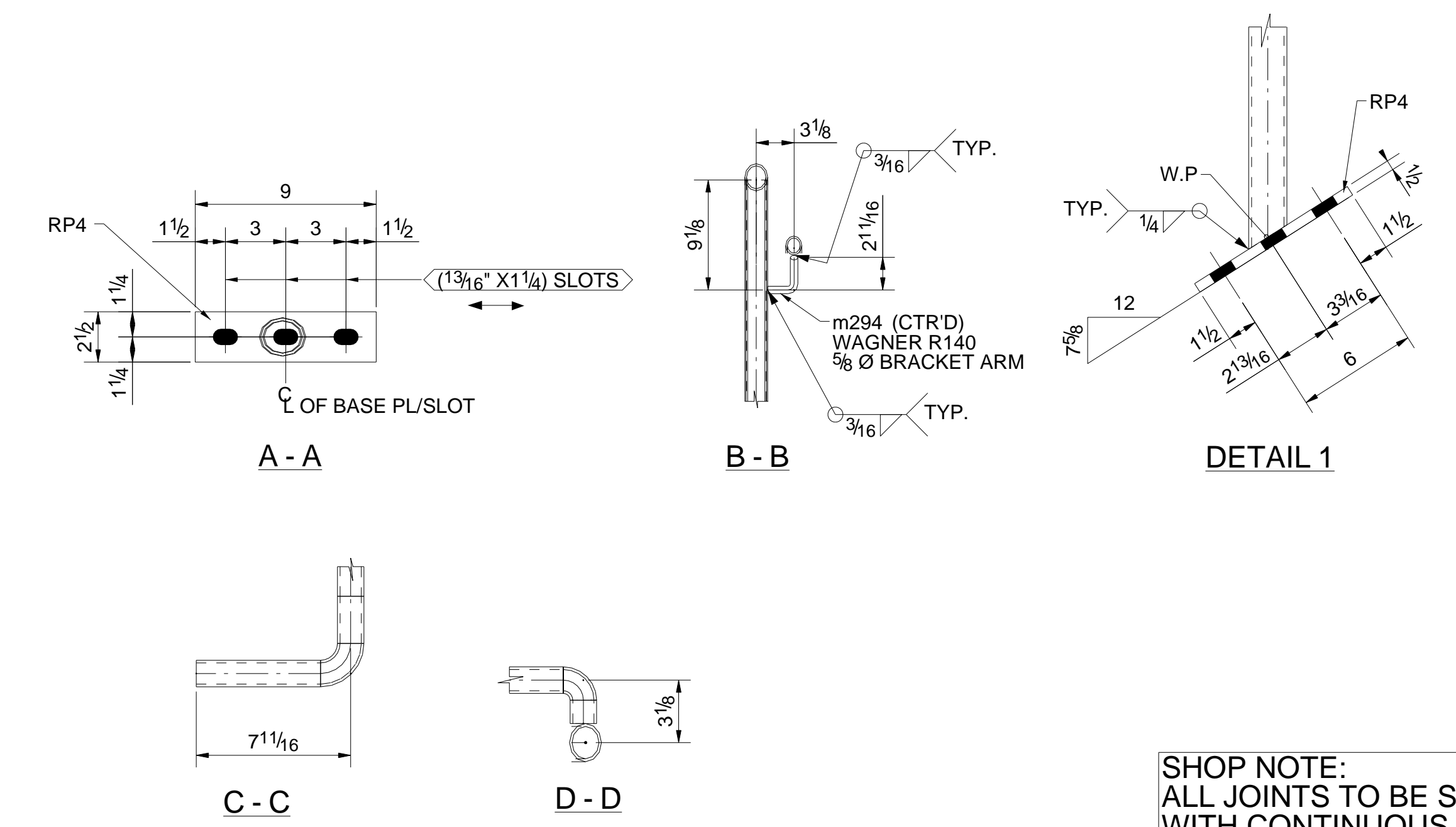


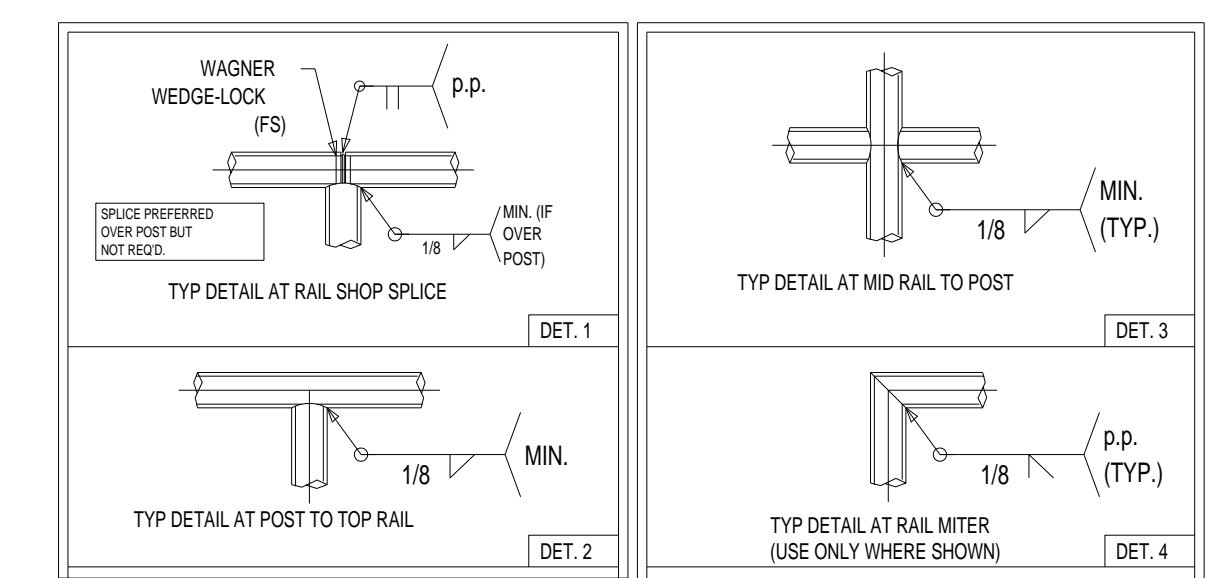
ONE - HANDRAIL - 81905HR1

SEQ	QTY
81M	1

SHPG. SEQUENCES		BILL OF MATERIAL									
81	MARK	NO. PCS	DESCRIPTION	LENGTH FT.	IN	FAB. MARK	P.M.	PREP	NOTES	PAY CODE	
1	81905HR1	1	HANDRAIL	21'-0"						RF	
		1	PIPE1-1/2SCH40	53	0	m8153				LFA500-GR.B	
		1	PIPE1SCH40	20	0	n8120				LFA500-GR.B	
		4	FL1/2"X2 1/2"	0	9"	RP4				A36	
		5	WAGNER R140	0	4 7/8"	m294				A36	
		1	WAGNER ELL #218			m351					



SHOP NOTE:
ALL JOINTS TO BE SEAL WELDED
WITH CONTINUOUS 1/8" FILLET
OR BUTT WELDED AS REQ'D



ALL OTHER MATERIAL TO BE A36 (U.N.)

7) ALL JOINTS TO BE SEAL WELDED.
8) PLACE VENT HOLES (AS REQ'D.) VISIBLE ON THE UNDERSIDE OF RAIL.

REV.	DESCRIPTION	DATE

FOR APPROVAL: 01/22/2015

FOR FABRICATION:
FOR FABRICATION:
FOR FABRICATION:

GENERAL NOTES

MATERIAL:
WF & WT's: A992
ALL OTHER: A36 (U.N.)
SURFACE PREP: SSSPC-SP8
AND PAINT:

HOLES: 13/16Ø (U.N.)
ELECTRODES: E70XX

ALL RUNNING DIMENSIONS FROM END OF MAIN MATERIAL.
ALL VERTICAL SPACING OF HOLES TO BE 3" UNLESS NOTED.
ALL RE-ENTRANT CUTS RADIUS (R=1/2" MIN).
ALL BEAMS TO BE FABRICATED WITH RESIDUAL CAMBER UP.
ALL H.S. SHOP BOLTS TO BE TORQUED UNLESS NOTED.
S.T. INDICATES "SNUG TIGHT".

ERECTION DWG. NO. E81903

DESCRIPTION: HANDRAIL DETAILS	DRAWN BY: AK	DATE: 01/19/2015
JOB:	CHKD. BY: DK	DATE: 01/19/2015
CUSTOMER:	JOB NUMBER	
DRAWING NUMBER		REV.
81905		

