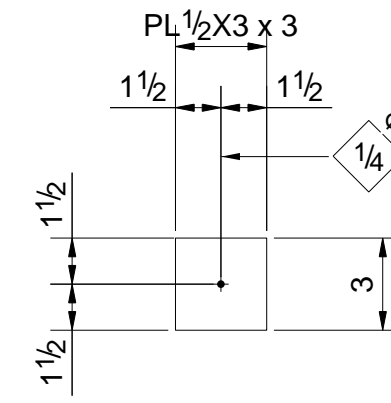


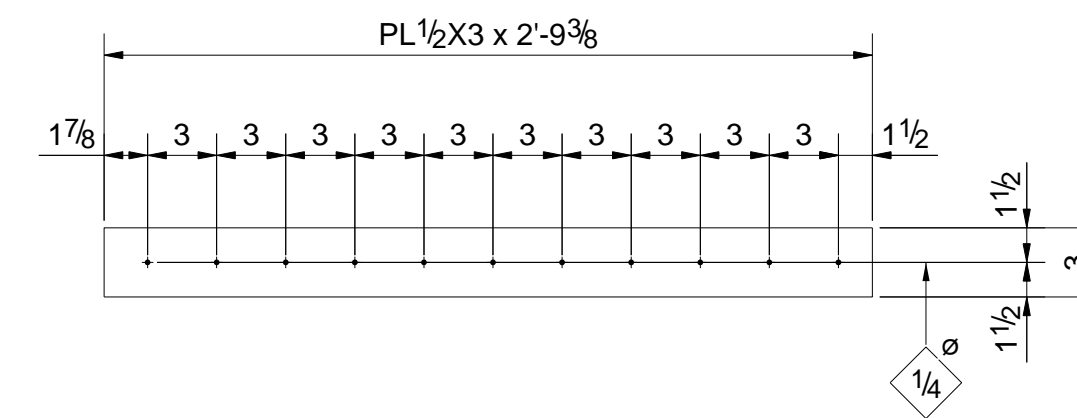
2-PLATES-p934

Mark	QTY
642P6	2



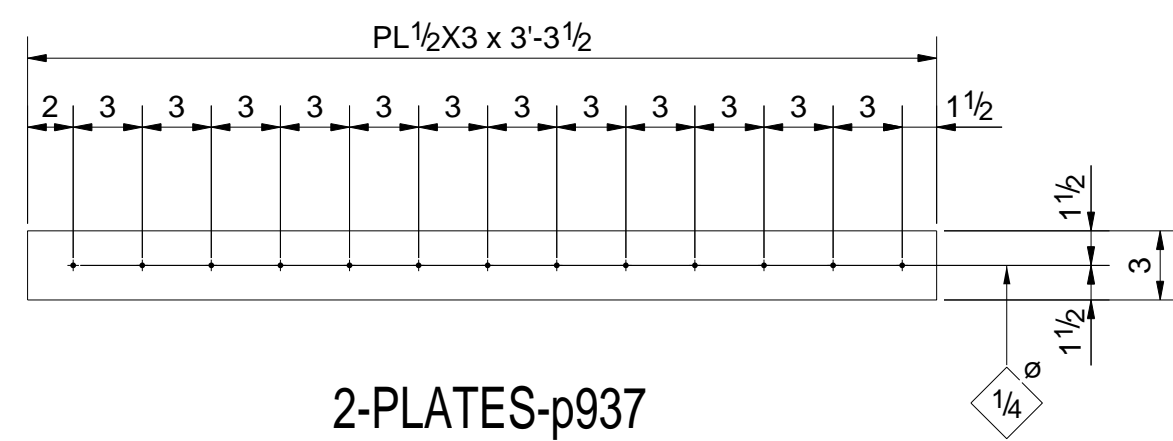
16-PLATES-p1090

Mark	QTY
643P2	16



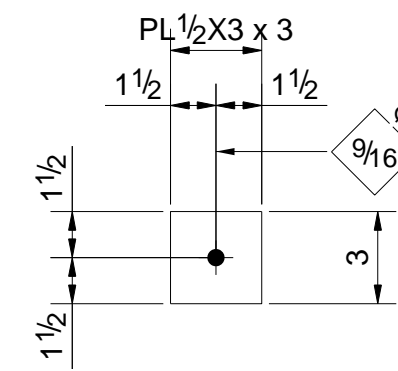
14-PLATES-p1519

Mark	QTY
642P3	14



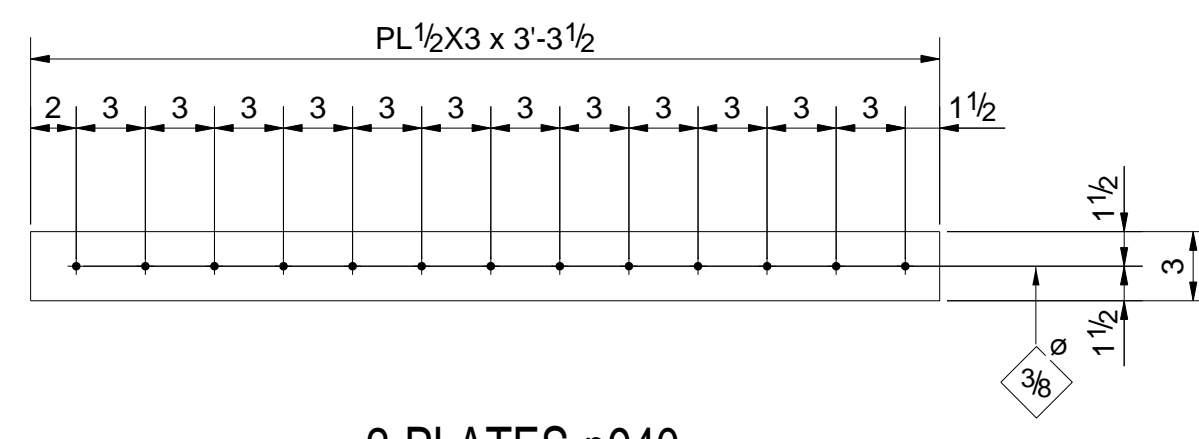
2-PLATES-p937

Mark	QTY
642P5	2



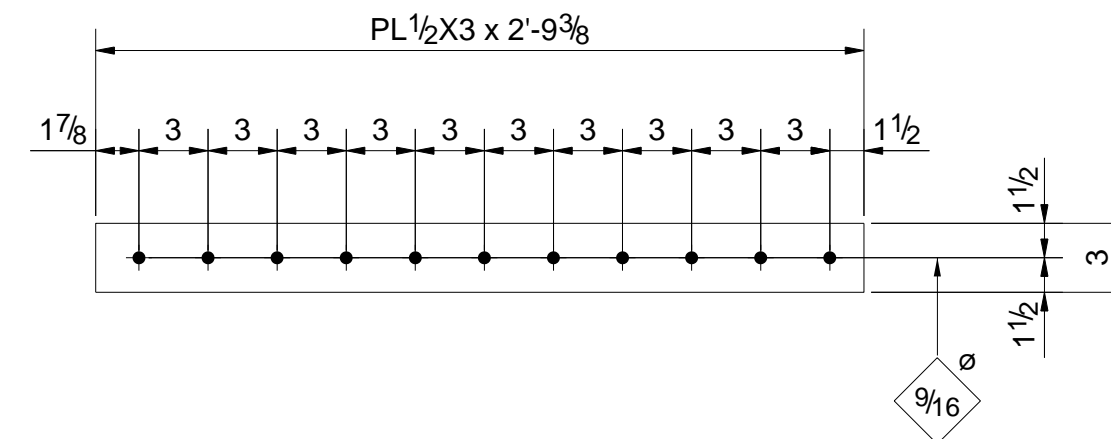
4-PLATES-p1115

Mark	QTY
643P3	4



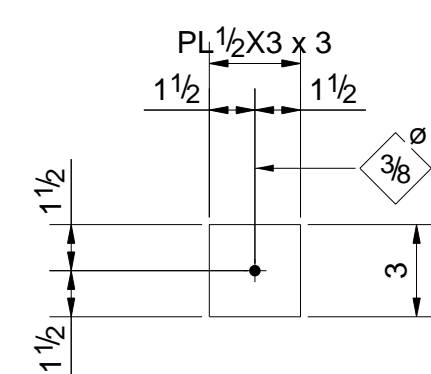
2-PLATES-p940

Mark	QTY
642P4	2



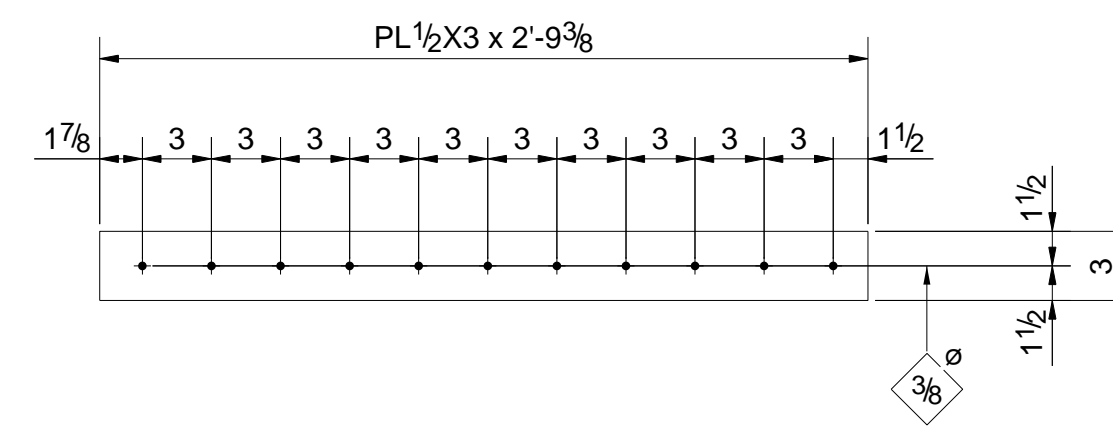
2-PLATES-p1517

Mark	QTY
642P2	2



4-PLATES-p1088

Mark	QTY
643P1	4



2-PLATES-p1518

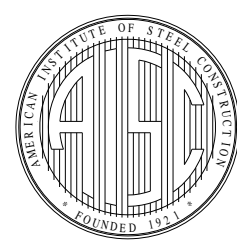
Mark	QTY
642P1	2

APPROVAL
SHOP
FIELD
REF. DWG.

JOB ORDER NO.

DRAWING NO. REV.

GS618 0



REVISIONS

0	For Fabrication	02/11/2015
---	-----------------	------------

HOLES	13/16 Ø UNO
EDGE DISTANCE	
WELD ROD	
STEEL	

PREP	
PAINT	
DFT	
NO PAINT WITHIN	

DRAWN BY	
DATE	10/14/2014
CHECKED BY	
DATE	02/11/2015

PART DETAILS (COURTYARD)

ARCHITECT
ANNETTE MILLER ARCHITECTS, INC.
ENGINEER
SHELL+MEYER ASSOCIATES, INC.
CONTRACTOR
MONARCH CONSTRUCTION CO.