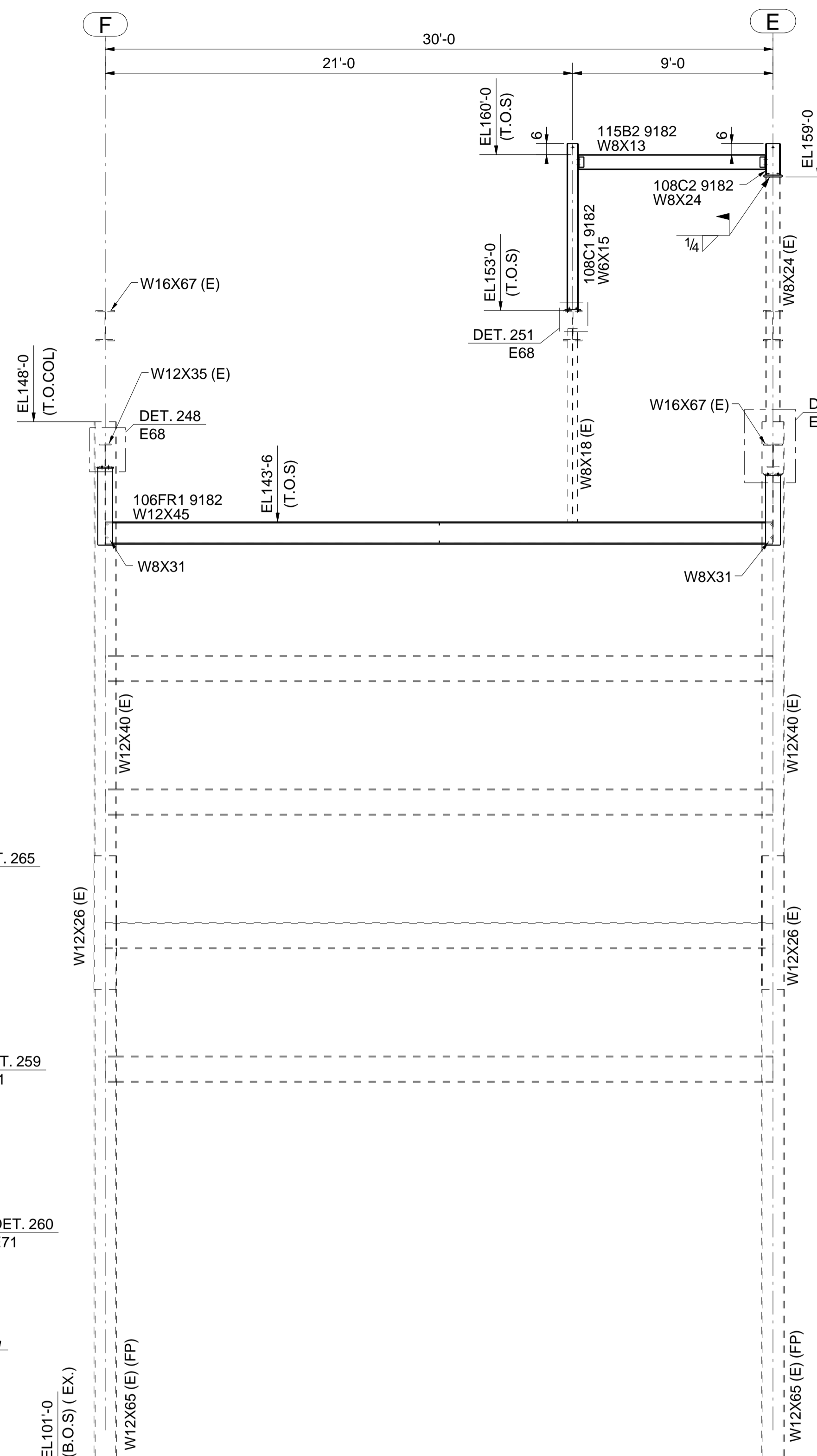
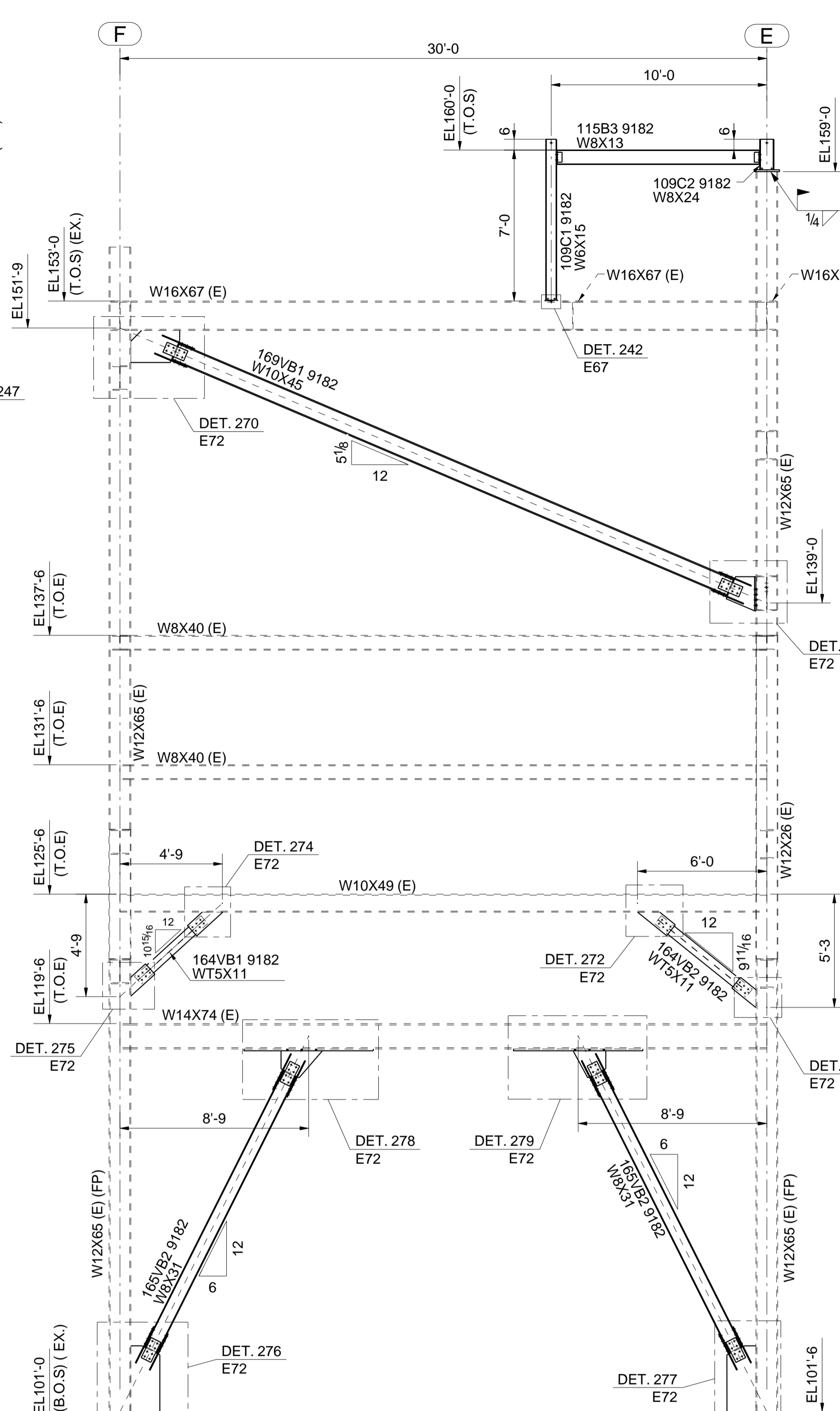


ELEVATION AT COLUMN LINE 205
(LOOKING WEST)

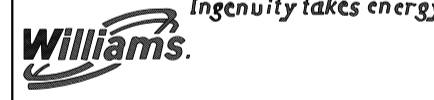



ELEVATION AT COLUMN LINE 210
(LOOKING WEST)



ELEVATION AT COLUMN LINE 220
(LOOKING WEST)

NOTE:
REFER TO SHEET E1 FOR
STANDARD NOTES.

CB&I - WILLIAMS			
SUPPLIER DRAWING DECAL Geismar Plant Expansion			
PROJECT NO.	9182	P.O. NO. -	180024-PO-1000-001
CODE	DESCRIPTION	SERIAL NO.	
# 1	NO COMMENTS		
# 2	REVIEWED WITH MINOR COMMENTS	TAG NO.	
# 3	COMMENTS		
# 4	REJECTED	FREEZE DATE	
# 5	SUPERSEDED		
# 6	VOID	SDR CODE: J01-G81	
# 7	FOR INFORMATION		
THESE COMMENTS DO NOT RELIEVE THE SUPPLIER OF HIS RESPONSIBILITY TO MEET THE REQUIREMENTS OF THE PO.			
BY:		DATE:	
3	Revised As Marked	04/26/2013	D.P
2	For Field	03/27/2013	D.P
B	For Approval	03/01/2013	D.P
1	Hold Removed	02/27/2013	D.P
REV.	REVISION DESCRIPTION	DATE	CHK.
CUSTOMER REFERENCE SHEET NO 1101094-3012 SHT. 12			
SCALE: NONE			
			
CUSTOMER:		PROJECT:	
DETAIL FOR: ELEVATION ALONG GRID 205, 210 & 220 P.O. No. 180024-PO-1000-001 DRAWN BY: _____ CHECKED BY: _____ JOB No. _____ SHEET No. E22			

PROJECT DOC. 180023-PO-1000-001-SD-001346