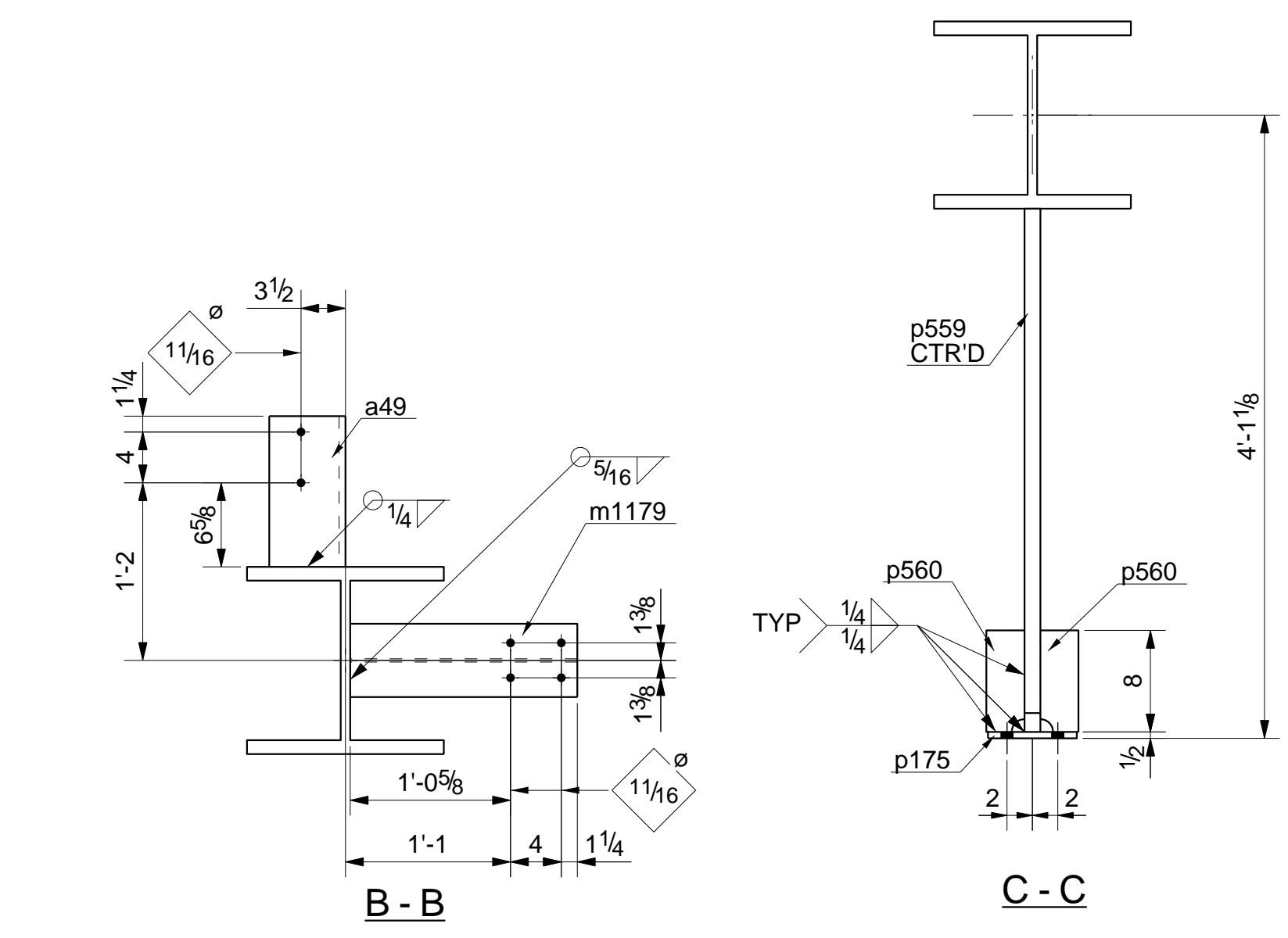
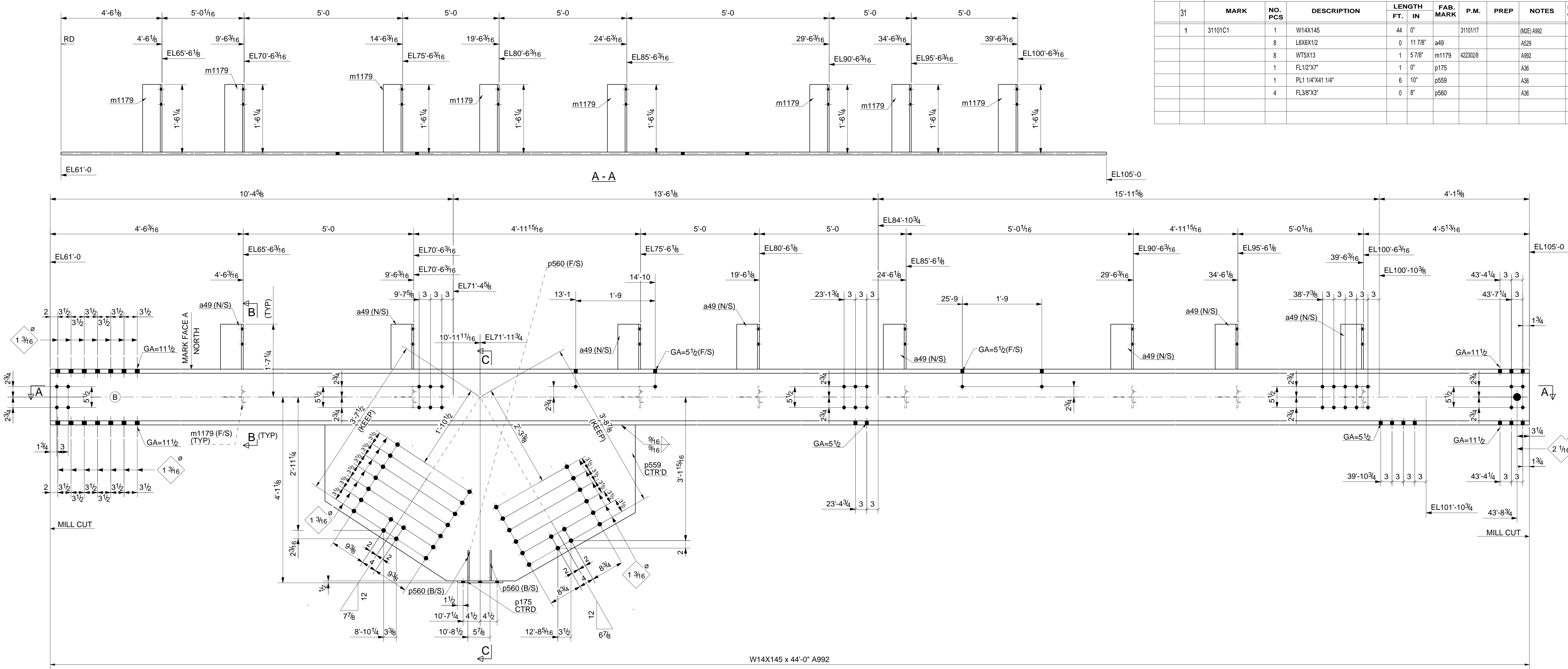


SHPG. SEQUENCES		BILL OF MATERIAL								
31	MARK	NO. PCS	DESCRIPTION	LENGTH FT.	IN	FAB. MARK	P.M.	PREP	NOTES	PAY CODE
1	31101C1	1	W14X145	44	0"		31101/17		(MZE)A992	1.4
		8	L6X6X1/2	0	11 7/8"	a49			A529	
		8	WT5X13	1	5 7/8"	m1179	4223028		A992	
		1	FL1/2"X7"	1	0"	p175			A36	
		1	PL1 1/4"X41 1/4"	6	10"	p559			A36	
		4	FL3/8"X3"	0	8"	p560			A36	



ONE - COLUMN - 31101C1	
GRID LOC.	W 14 3/4" x 3/4"
1/A	F 15 1/2" x 1 1/16"
	K 2 3/8"

- SHOP NOTE:**
1. ALL JOINTS TO BE SEAL WELDED WITH CONTINUOUS 1/8" FILLET OR BUTT WELDED AS REQ'D
  2. MINIMUM FILLET WELD SIZE 1/4" U.N.O
  3. ALL COLUMN BE MILLED AT SPLICE. U.N.O

FOR APPROVAL: 03/13/2012		
FOR FABRICATION: 04/10/2012		
FOR FABRICATION:		
REV.	DESCRIPTION	DATE
<b>GENERAL NOTES</b>		
MATERIAL: WF & WT's: A992 (U.N.) ALL OTHER: A36 (U.N.O)		HOLES: 15/16" Ø U.N.O. ELECTRODES: E70 (L.H.)
SURFACE PREP: SSPC-SP8 AND PAINT:		ALL RUNNING DIMENSIONS FROM END OF MAIN MATERIAL ALL VERTICAL SPACING OF HOLES TO BE 3" UNLESS NOTED. ALL RE-ENTRANT CUTS RADIUSED (R=1/2" MIN). ALL BEAMS TO BE FABRICATED WITH RESIDUAL CAMBER UP. ALL H.S. SHOP BOLTS TO BE TORQUED UNLESS NOTED. S.T. INDICATES "SNUG TIGHT". ERECTION DWG. NO. E31002,31006,31010
DESCRIPTION: COLUMN DETAILS		DRAWN BY: DATE: 02/23/2012
JOB:		CHKD. BY: DATE: 03/13/2012
CUSTOMER:		JOB NUMBER
		DRAWING NUMBER: 31101
		REV.: 0

