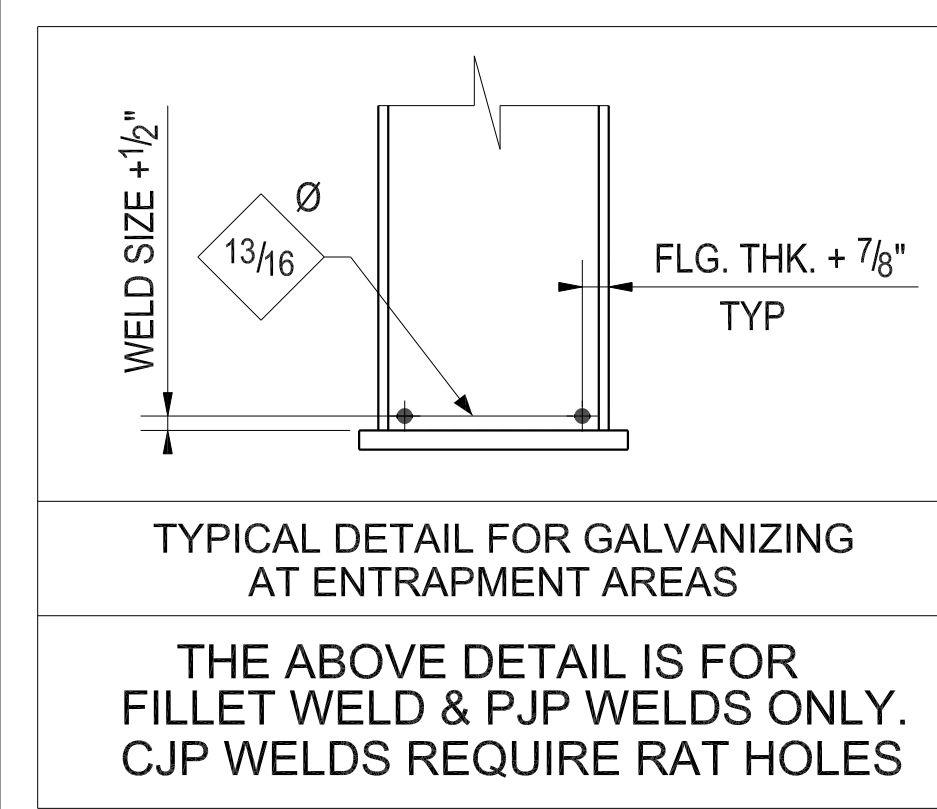
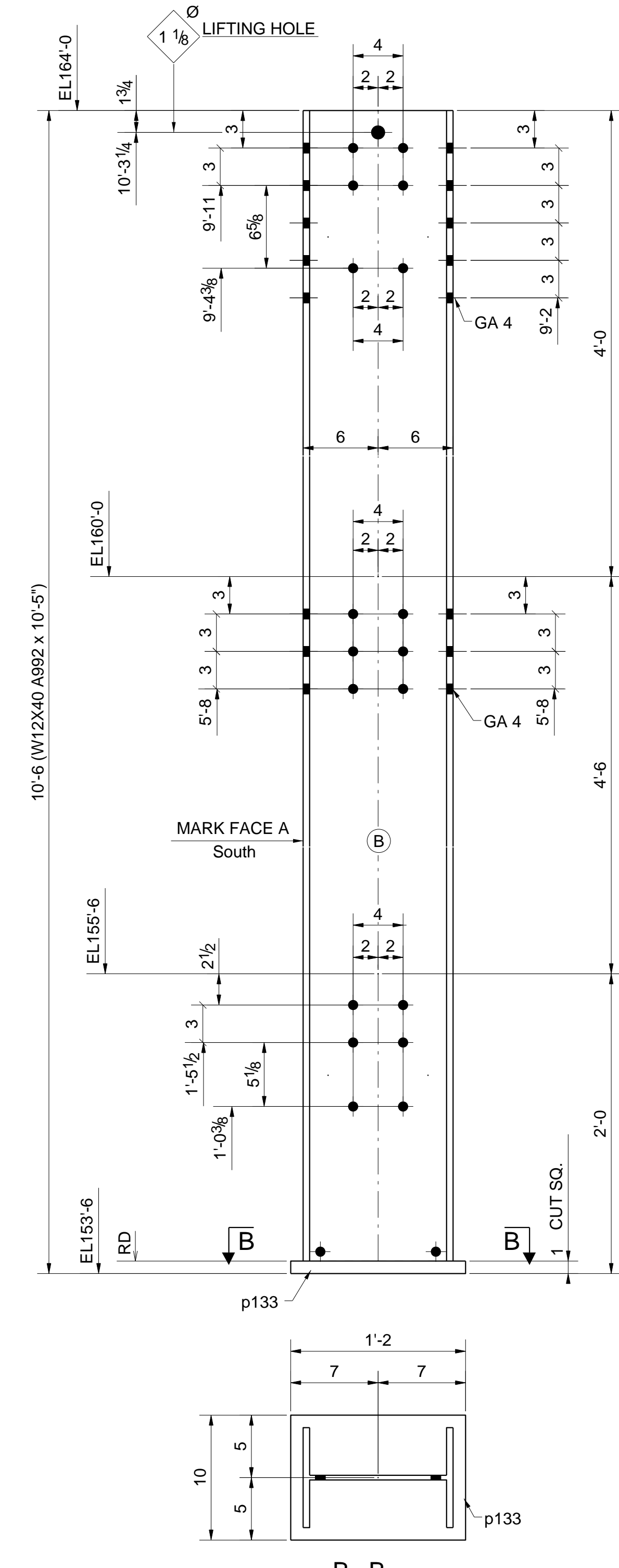
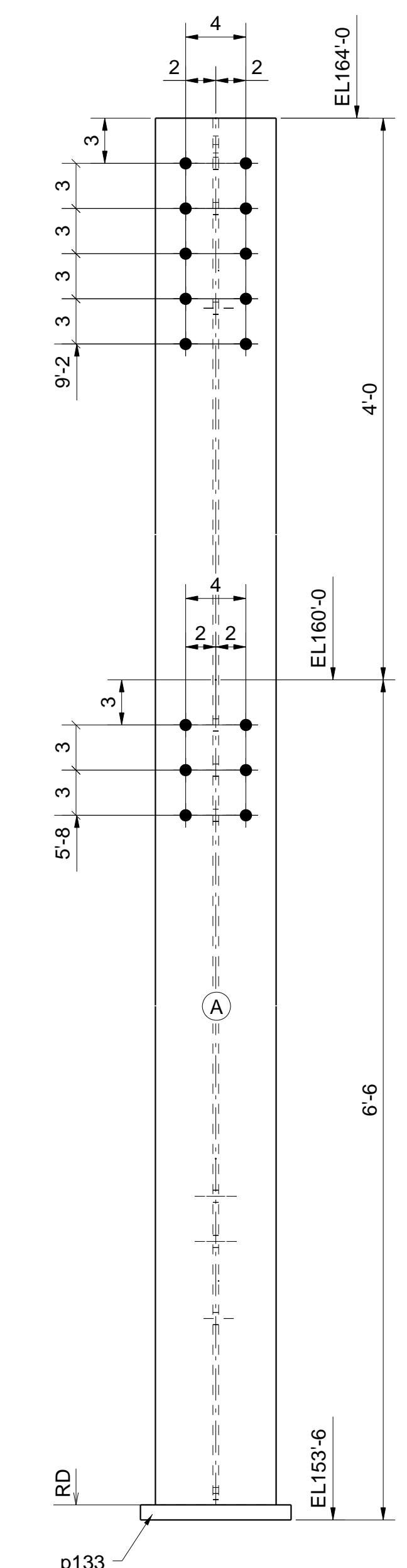
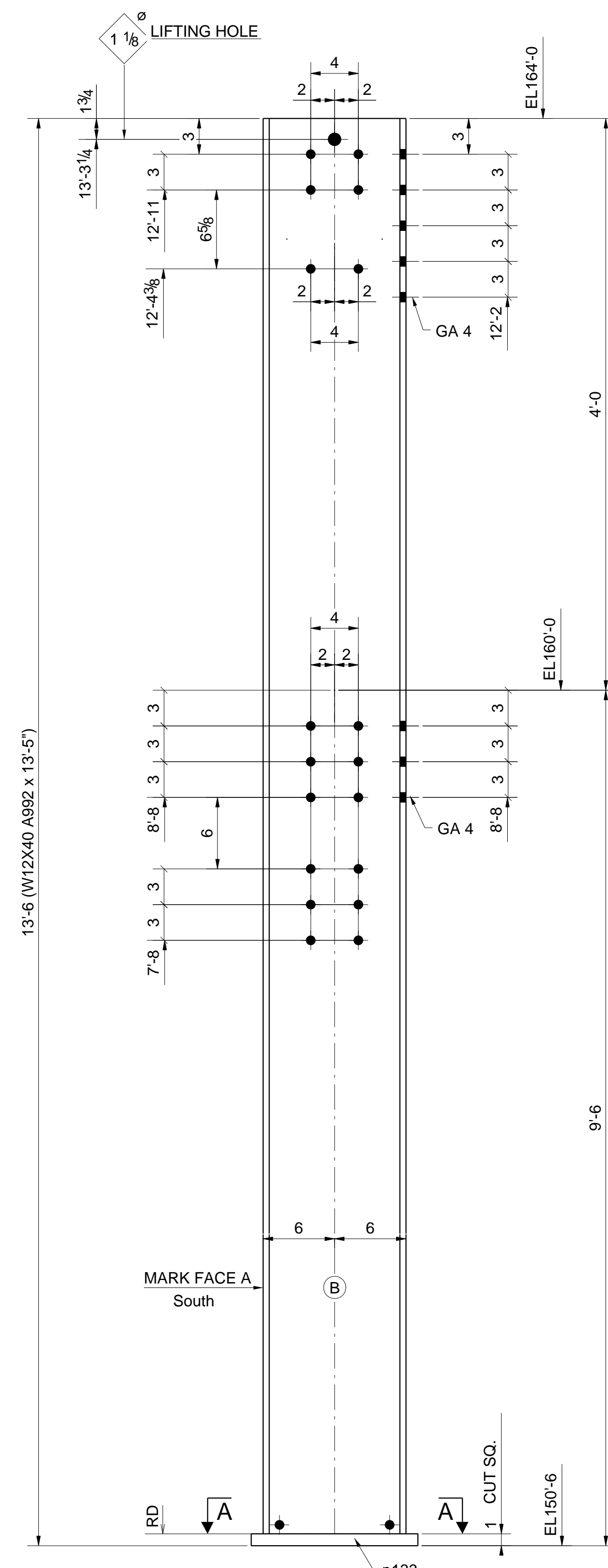


BILL OF MATERIAL

Quantity Per E-Dwg	E-Dwg Ref.	Line #	Quantity Total	Price Mark	Description	Length	Weight Total	Remarks
1	E2	2	1	6C1 9182	W12X40	13 5'	534	SIE, LO A992
		3	1	p133	PL1'X10"	1 2'	40	A572
		4						
		5						
1	E1	6	1	6C2 9182	W12X40	10 5'	415	SIE, LO A992
		7	1	p133	PL1'X10"	1 2'	40	A572
		8						
		9						
		10						
		11						
		12						
		13						
		14						
		15						
		16						
		17						
		18						
		19						
		20						
		21						
		22						
		23						
		24						
		25						
		26						
		27						
		28						
		29						
		30						
		31						
		32						
		33						
		34						
		35						
		36						
		37						
		38						
		39						
		40						
		41						
		42						
		43						
		44						
		45						

Total weight: 1027



A-A		
W	12"	X 3/8"
F	8"	X 1/2"
K	1 3/8"	

B-B		
W	12"	X 3/8"
F	8"	X 1/2"
K	1 3/8"	

AWS MINIMUM WELD SIZES	
MATERIAL THICKNESS OF THINNER PART JOINED (IN.)	MINIMUM SIZE OF FILLET WELD (IN.) (UNL. NTD.)
UPTO TO 3/4"	1/4" E70XX
OVER 3/4"	5/16" E70XX

SUPPLIER DRAWING DECAL Geismar Plant Expansion	
PROJECT NO. 9182	P.O. NO. - 180024-PO-1000-001
CODE #1 NO COMMENTS	SERIAL NO.
CODE #2 REVIEWED WITH MINOR COMMENTS	TAG NO.
CODE #3 COMMENTS	FREEZE DATE
CODE #4 REJECTED	SDR CODE: J01-F84
CODE #5 SUPERSEDED	
CODE #6 VOID	
CODE #7 FOR INFORMATION	
THESE COMMENTS DO NOT RELIEVE THE SUPPLIER OF HIS RESPONSIBILITY TO MEET THE REQUIREMENTS OF THE PO.	
BY:	DATE:
0 FOR SHOP & REVIEW	01/11/2013 D.P.
A For Approval	12/20/2012
REV. REVISION DESCRIPTION	DATE CHK
GENERAL NOTES:	
1) All Holes 13/16" Unless Noted Otherwise.	
2) Finish H.D. GALVANIZED	
3) All Welds 1/4" Cont. Fillet U.N.O. (Seal)	
4) Weld Electrode E70XXLH	
NOTICE TO CONTRACTOR & ERECTOR: BACK CHARGES FOR CORRECTIVE WORK OR REPLACEMENT MATERIALS WILL NOT BE ACCEPTED UNLESS AUTHORIZED BY ORIZON INDUSTRIES BEFORE SUCH COSTS ARE INCURRED.	
ERECT. DWG. REF. - E1&E2	
CUSTOMER:	
PROJECT:	
GEISMAR OLEFINS PLANT GEISMAR, LOUISIANA MAIN EAST/WEST PIPERACK ADDITIONS	
DETAIL FOR:- COLUMNS	
P.O. No. 180024-PO-1000-001	DRAWN BY: S.B CHECKED BY: D.P.
JOB No.	SHEET No. 6

PROJECT DOC. 180023-PO-1000-001-SD-001244