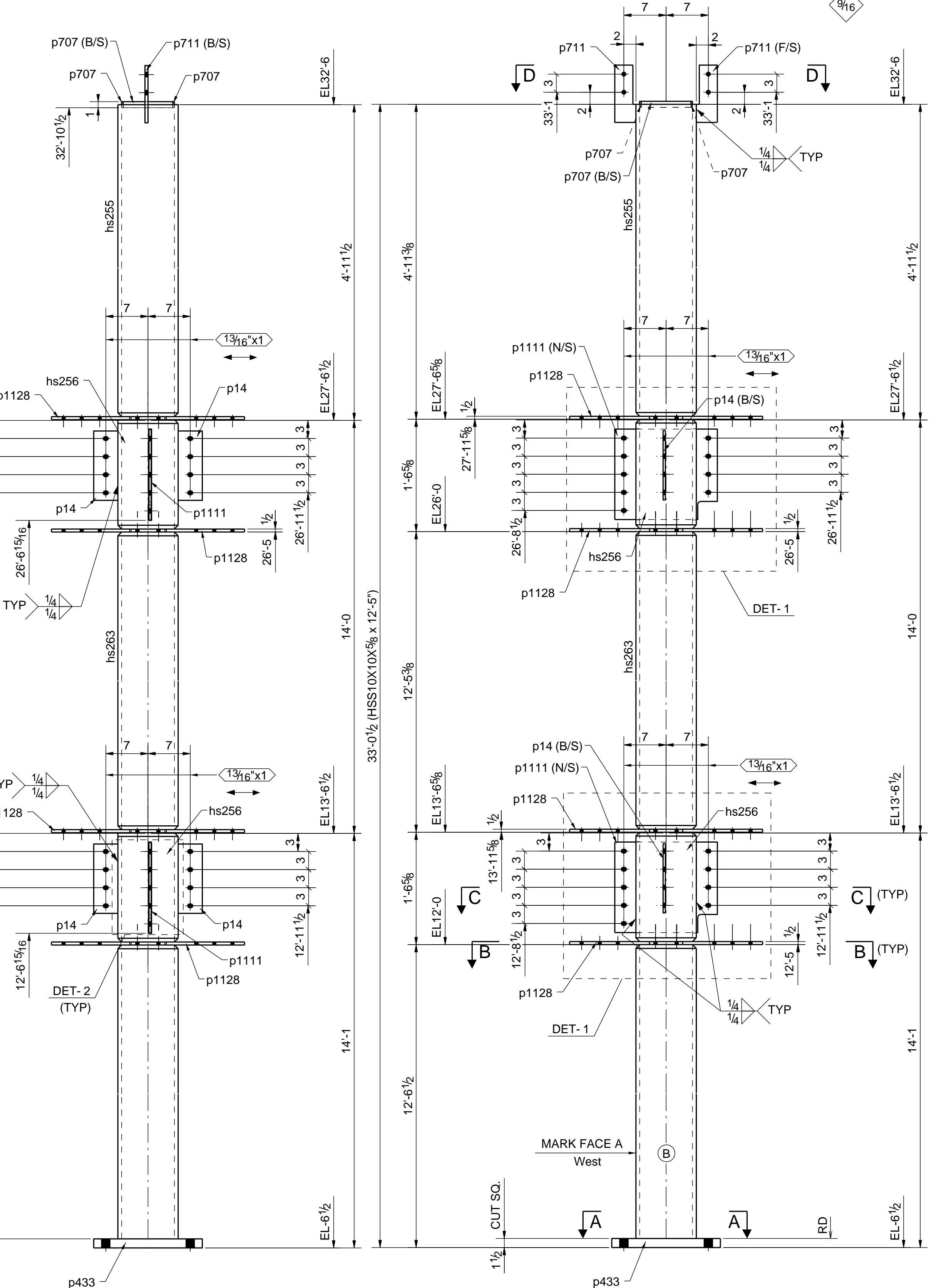
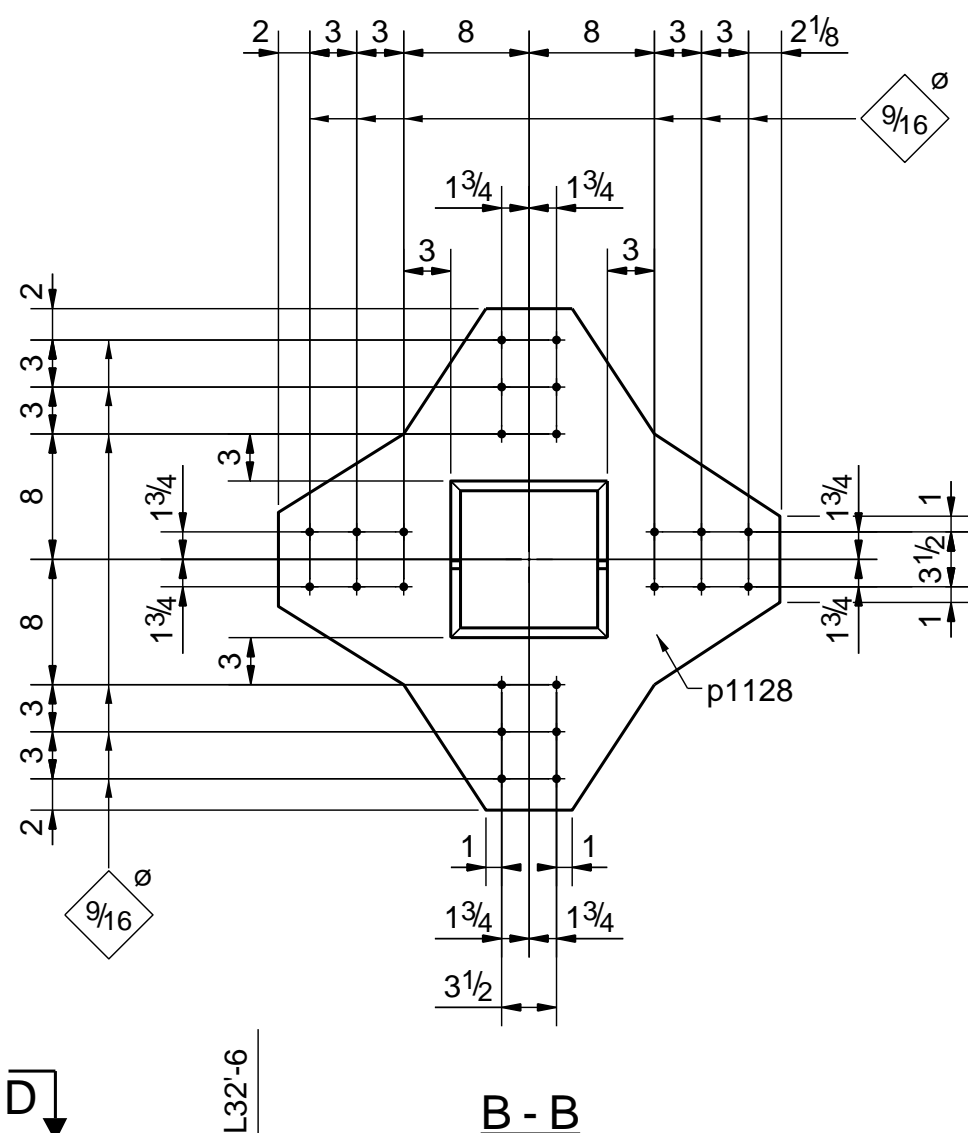
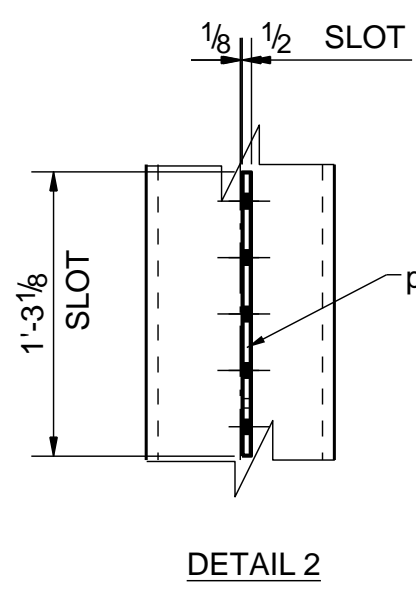
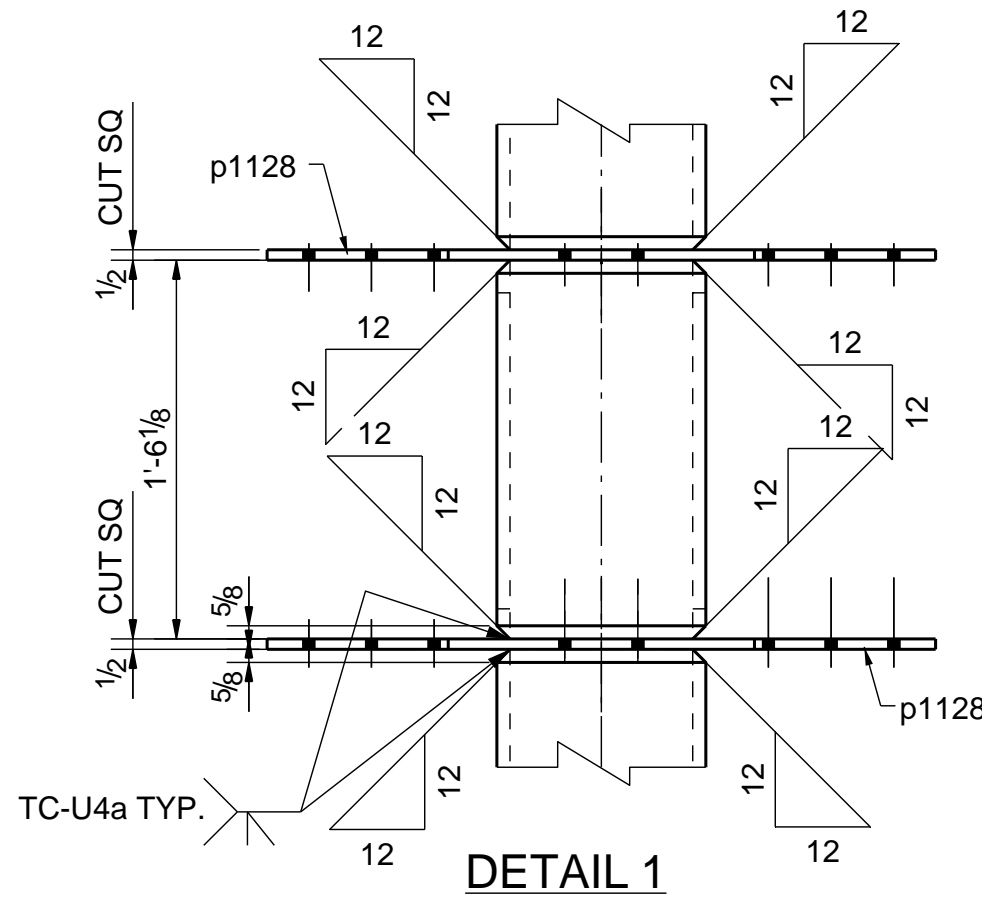
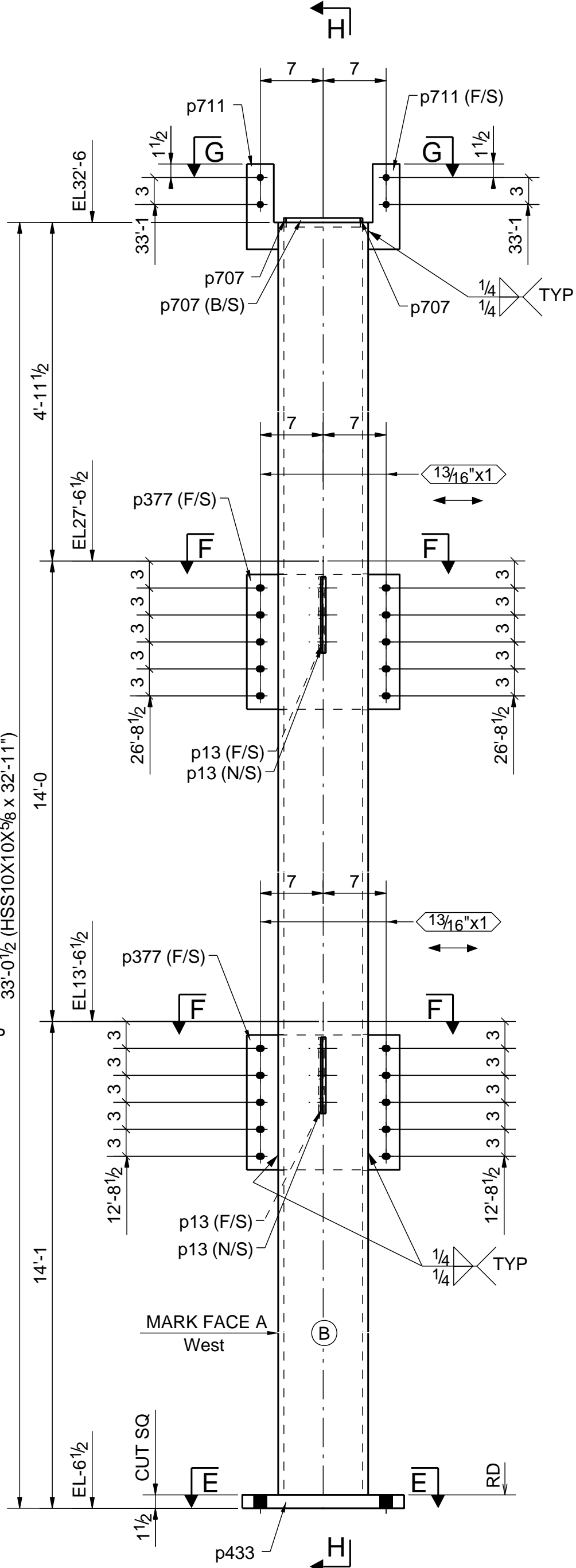


**BILL OF MATERIAL**

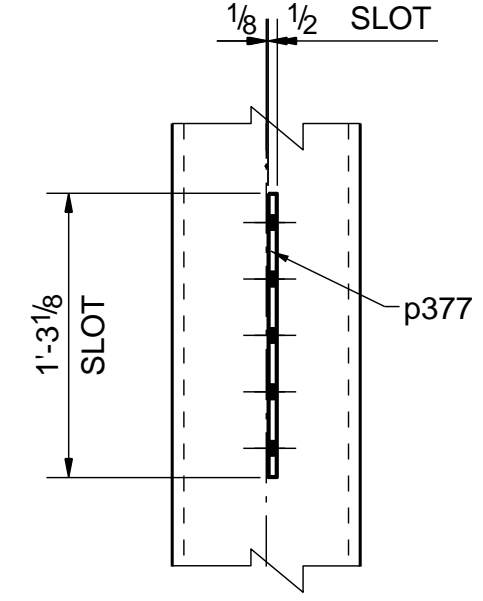
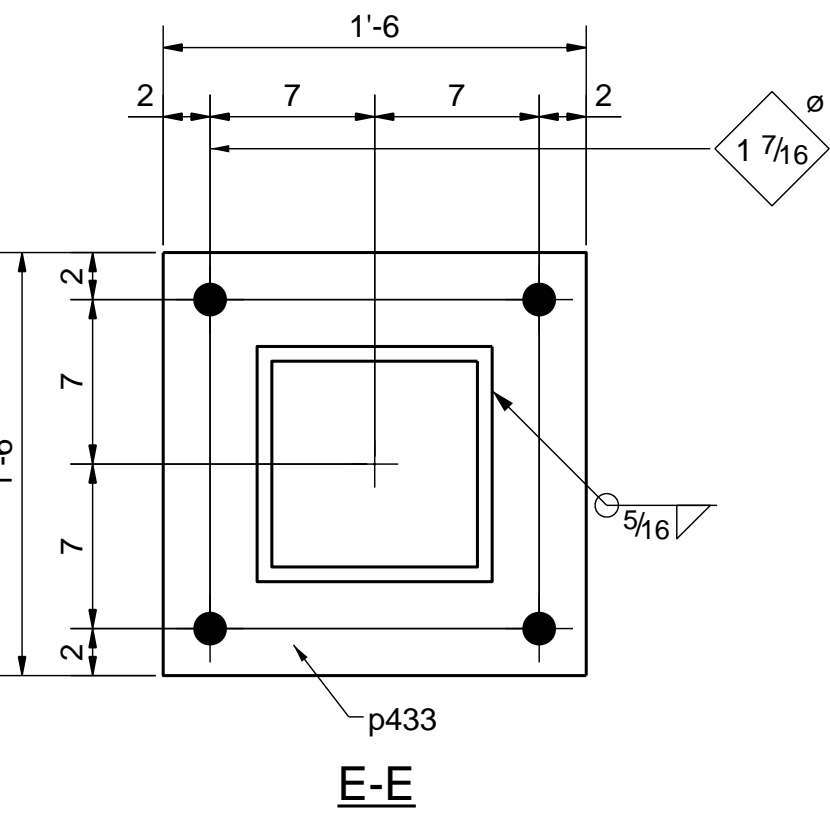
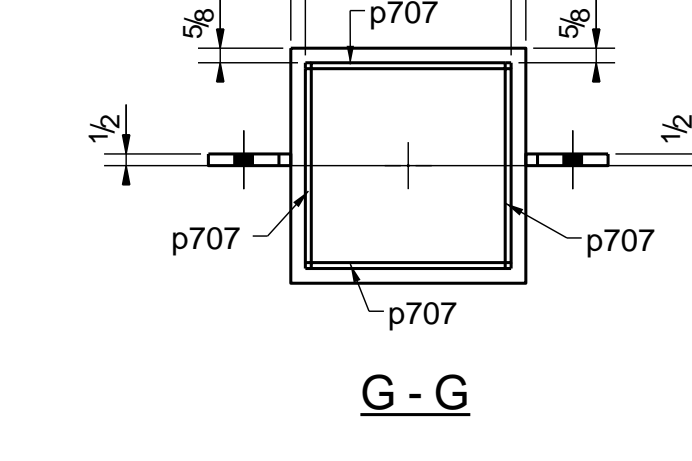
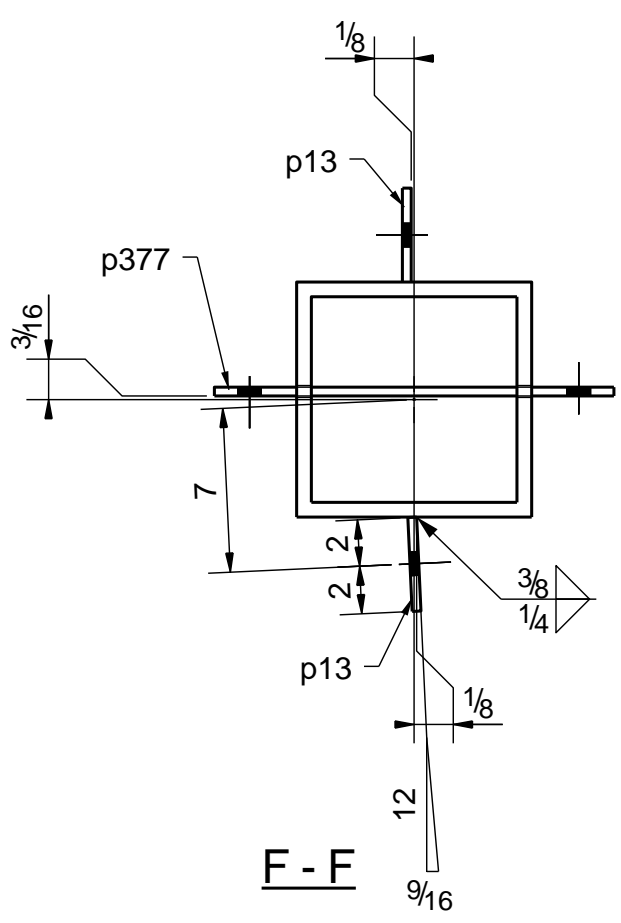
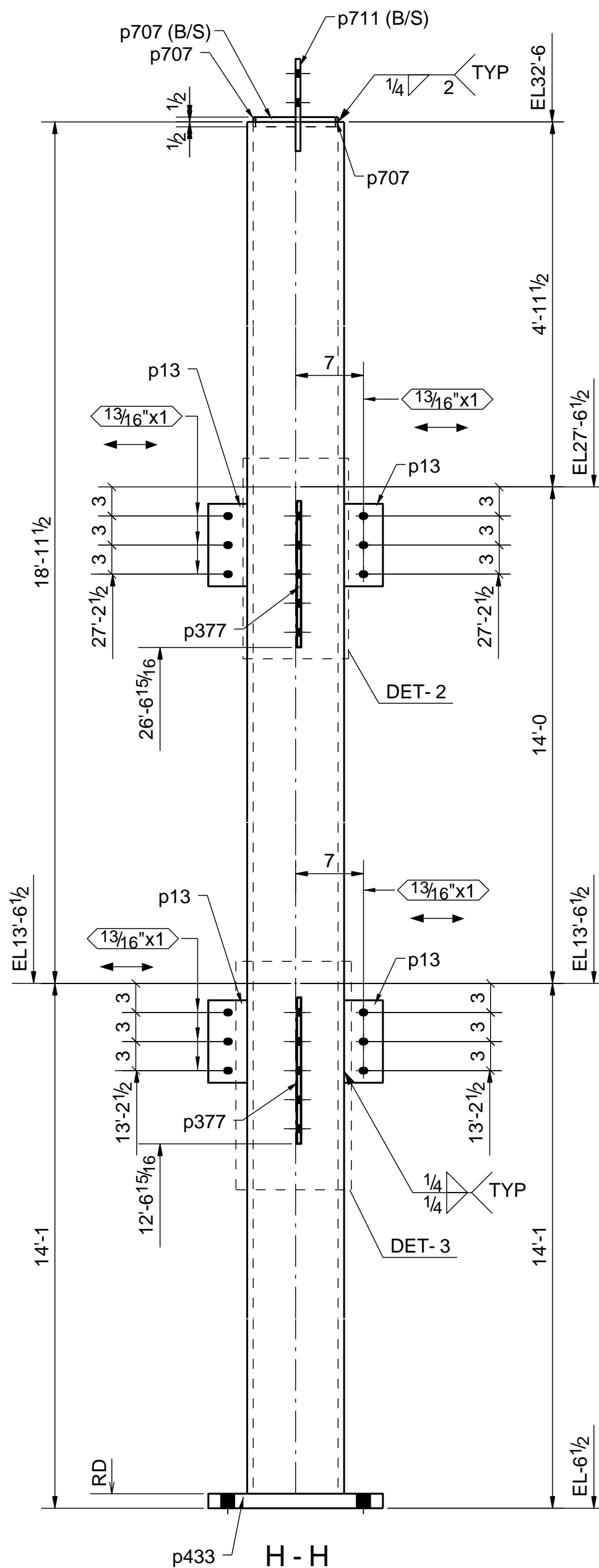
Qty Ea	Qty Tot	Piece Mark	Description	Length	Weight Total	Remarks	Adv Mill #	Steel Grade
	1	4007C1	COLUMN					
1	1		HSS10X10X5/8	12'-5"	887			A500-GR.B
1	1	hs255	HSS10X10X5/8	4'-10 7/8"	351			A500-GR.B
2	2	hs256	HSS10X10X5/8	1'-6 1/8"	216			A500-GR.B
1	1	hs263	HSS10X10X5/8	12'-4 7/8"	887			A500-GR.B
4	4	p14	FL3/8"X4"	0'-11 1/2"	20			A36
1	1	p433	PL1 1/2"X18"	1'-6"	138			A36
4	4	p707	FL1/4"X1"	0'-8 1/4"	2			A36
2	2	p711	FL1/2"X3 1/2"	0'-9 1/2"	9			A36
2	2	p1111	PL3/8"X15"	1'-5"	52			A36
4	4	p1128	PL1/2"X29 3/4"	2'-5 15/16"	341			A36
	1	4007C2	COLUMN					
1	1		HSS10X10X5/8	32'-11"	2352			A500-GR.B
4	4	p13	FL3/8"X4"	0'-8 1/2"	14			A36
2	2	p377	PL3/8"X15"	1'-5"	54			A36
1	1	p433	PL1 1/2"X18"	1'-6"	138			A36
4	4	p707	FL1/4"X1"	0'-8 1/4"	2			A36
2	2	p711	FL1/2"X3 1/2"	0'-9 1/2"	9			A36



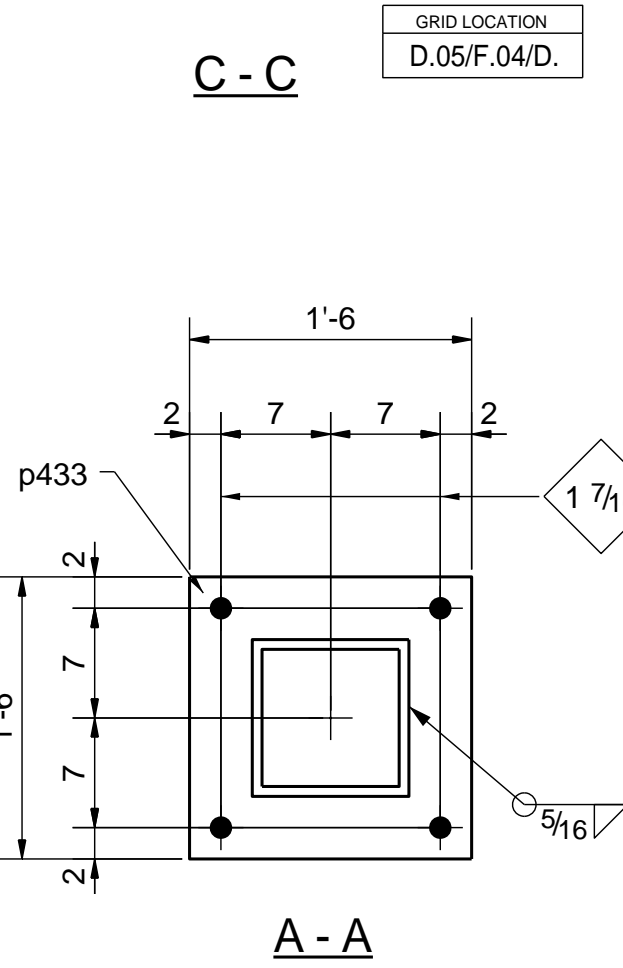
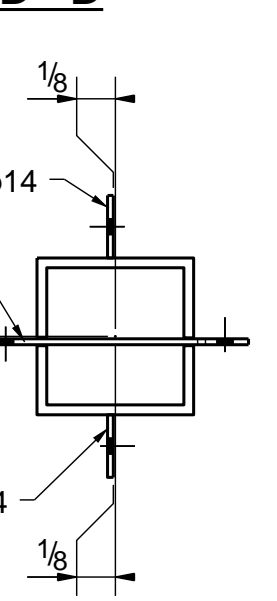
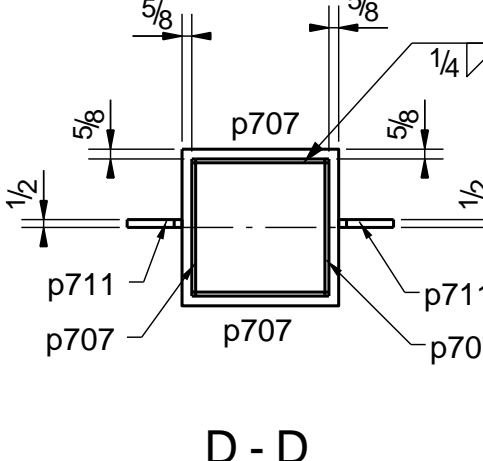
ONE - COLUMN - 4007C1



ONE - COLUMN - 4007C2



DETAIL 3



A-A

CITY OF HOUSTON APPROVED FABRICATOR #867

**NOTICE TO CONTRACTORS AND ERECTOR**  
 BACK CHARGES FOR CORRECTIVE WORK OR REPLACED MATERIALS  
 WILL NOT BE ACCEPTED UNLESS AUTHORIZED IN WRITING BY  
 POSTEL INTERNATIONAL INC. BEFORE SUCH COSTS ARE INCURRED

For Approval

REF. DWG. E4000, E4001, E4003 & E4004

ERECTION BOLTS			
QUAN.	SIZE	LENGTH	TYPE

SHOP NOTES:  
 A36 U.N.O.  
 E70XX  
 PAINT: ONE S/C STANDARD PRIMER  
 HOLES: 13/16" U.N.O. UNL. NTD.

REVISIONS		
NO.	DATE	BY
1	04/13/2015	S.A.

PROJ.	DRAWN BY:	CHK'D BY:	JOB NO.	SHEET NO.
	DATE: 04/13/2015	DATE: 04/13/2015		4007