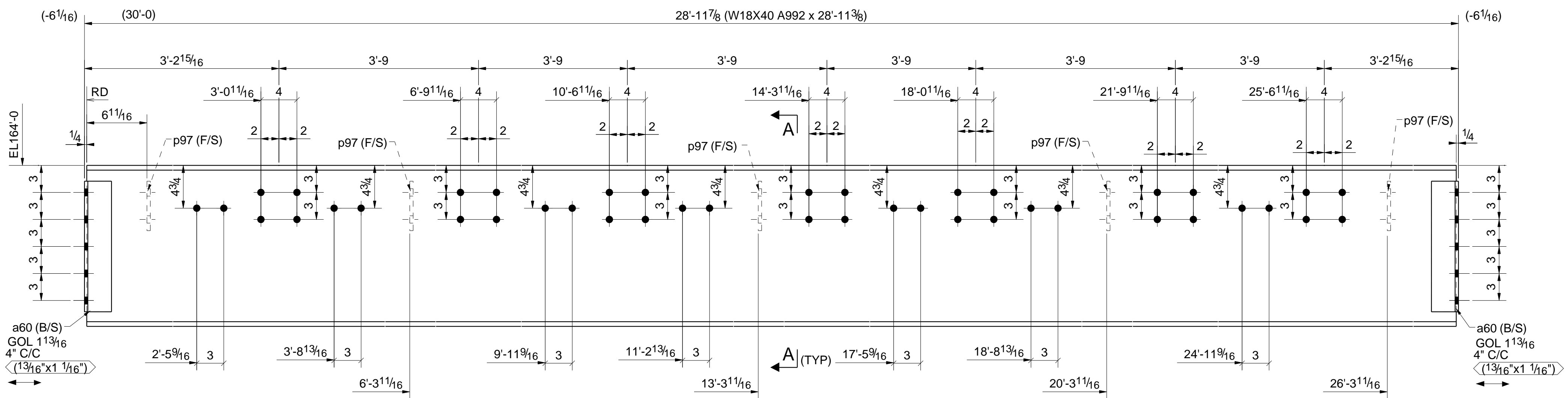
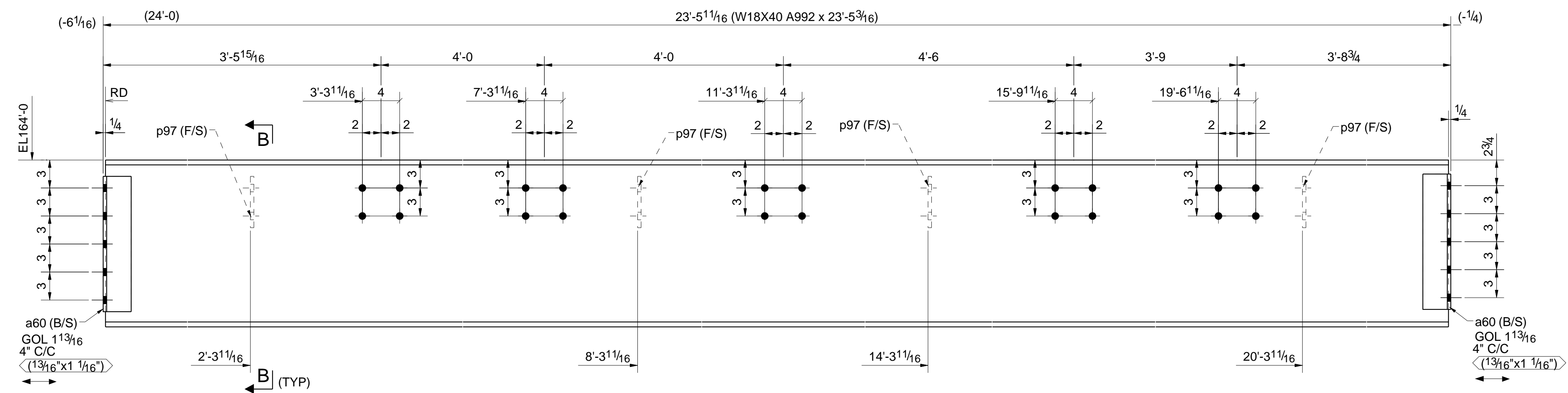
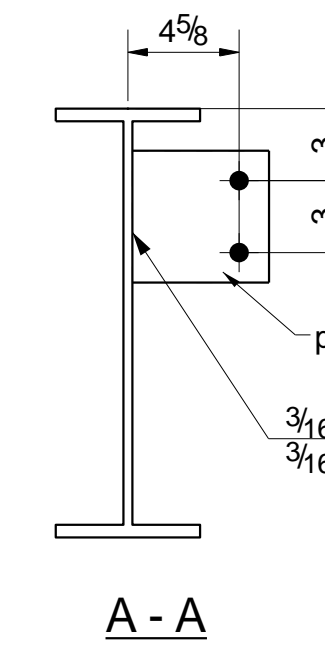


JOB No.	9182	ORIZON INDUSTRIES		SHEET No.	13			
COATING	H.D. GALV.	STEEL FABRICATION						
BILL OF MATERIAL								
Quantity Per E-Cwg	E-Dwg Ref.	Line #	Quantity Total	Price Mark	Description	Length	Weight Total	Remarks
1	E2	2	1	13B1 9182	W18X40	28 11 3/8"	1162	LO A992
		3	4	a60	L3X3X3/8	1 2 1/2"	9	LO A36
		4	5	p97	PL3/8"X5 1/2"	0 5 11/16"	3	SLO A572
FIELD BOLT								
		7	20		A325N 3/4" DIA	0 2 1/4"		1 HD 1 LIW
1	E1	9	1	13B2 9182	W18X40	23 5 3/16"	941	LO A992
		10	4	a60	L3X3X3/8	1 2 1/2"	9	LO A36
		11	4	p97	PL3/8"X5 1/2"	0 5 11/16"	3	SLO A572
FIELD BOLT								
		14	20		A325N 3/4" DIA	0 2 1/4"		1 HD 1 LIW
1	E2	16	1	13B3 9182	W18X40	28 11 3/8"	1162	LO A992
		17	4	a60	L3X3X3/8	1 2 1/2"	9	LO A36
		18	5	p97	PL3/8"X5 1/2"	0 5 11/16"	3	SLO A572
FIELD BOLT								
		21	20		A325N 3/4" DIA	0 2 1/4"		1 HD 1 LIW
Total weight:						3415		



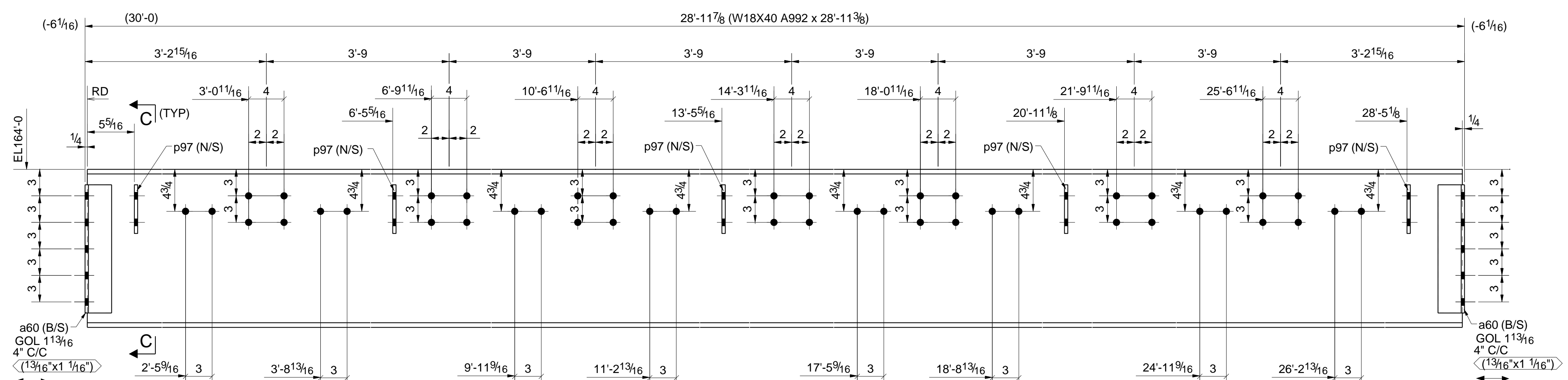
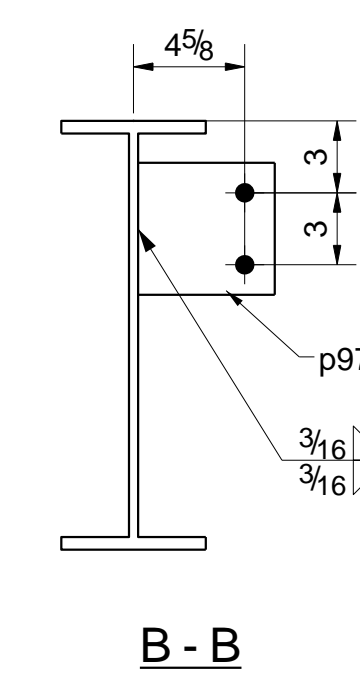
ONE - BEAM - 13B1 9182

W 17 7/8" x 3/8"
 F 6" x 1/2"
 K 1 3/16"



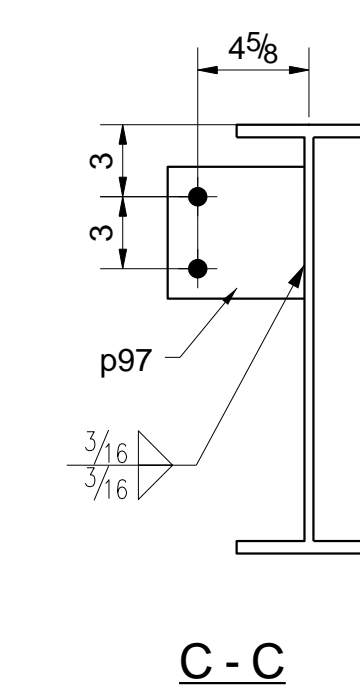
ONE - BEAM - 13B2 9182

W 17 7/8" x 3/8"
 F 6" x 1/2"
 K 1 3/16"



ONE - BEAM - 13B3 9182

W 17 7/8" x 3/8"
 F 6" x 1/2"
 K 1 3/16"



AWS MINIMUM WELD SIZES	
MATERIAL THICKNESS OF THINNER PART JOINED (IN.)	MINIMUM SIZE OF FILLET WELD (IN.) (UNL. NTD.)
UPTO TO 3/4"	1/4" E70XX
OVER 3/4"	5/16" E70XX

CB&I - WILLIAMS
 SUPPLIER DRAWING DECAL
 Geismar Plant Expansion

PROJECT NO. 9182 P.O. NO. 180024-PO-1000-001

# 1	NO COMMENTS	SERIAL NO.
# 2	REVIEWED WITH MINOR COMMENTS	TAG NO.
# 3	COMMENTS	FREEZE DATE
# 4	REJECTED	SDR CODE: J01-F84
# 5	SUPERSEDED	
# 6	VOID	
# 7	FOR INFORMATION	

THESE COMMENTS DO NOT RELIEVE THE SUPPLIER OF HIS RESPONSIBILITY TO MEET THE REQUIREMENTS OF THE PO.

BY: DATE:

0	FOR SHOP & REVIEW	01/11/2013	DP
A	For Approval	12/20/2012	
REV	REVISION DESCRIPTION	DATE	CHK

GENERAL NOTES:

- All Holes 13/16" Unless Noted Otherwise.
- Finish H.D. GALVANIZED
- All Welds 1/4" Cont. Fillet U.N.O. (Seal)
- Weld Electrode E70XXLH

NOTICE TO CONTRACTOR AND ERECTOR:
 BACK CHARGES FOR CORRECTIVE WORK OR REPLACEMENT MATERIALS WILL NOT BE ACCEPTED UNLESS AUTHORIZED BY ORIZON INDUSTRIES BEFORE SUCH COSTS ARE INCURRED.

ERECT. DWG. REF. - E1&E2

CUSTOMER: GEISMAR OLEFINS PLANT
 PROJECT: GEISMAR, LOUISIANA
 MAIN EAST/WEST PIPERACK ADDITIONS

DETAIL FOR:- BEAMS
 P.O. No. 180024-PO-1000-001
 DRAWN BY: S.B
 CHECKED BY: D.P
 JOB No. SHEET No. 13

PROJECT DOC. 180023-PO-1000-001-SD-001251