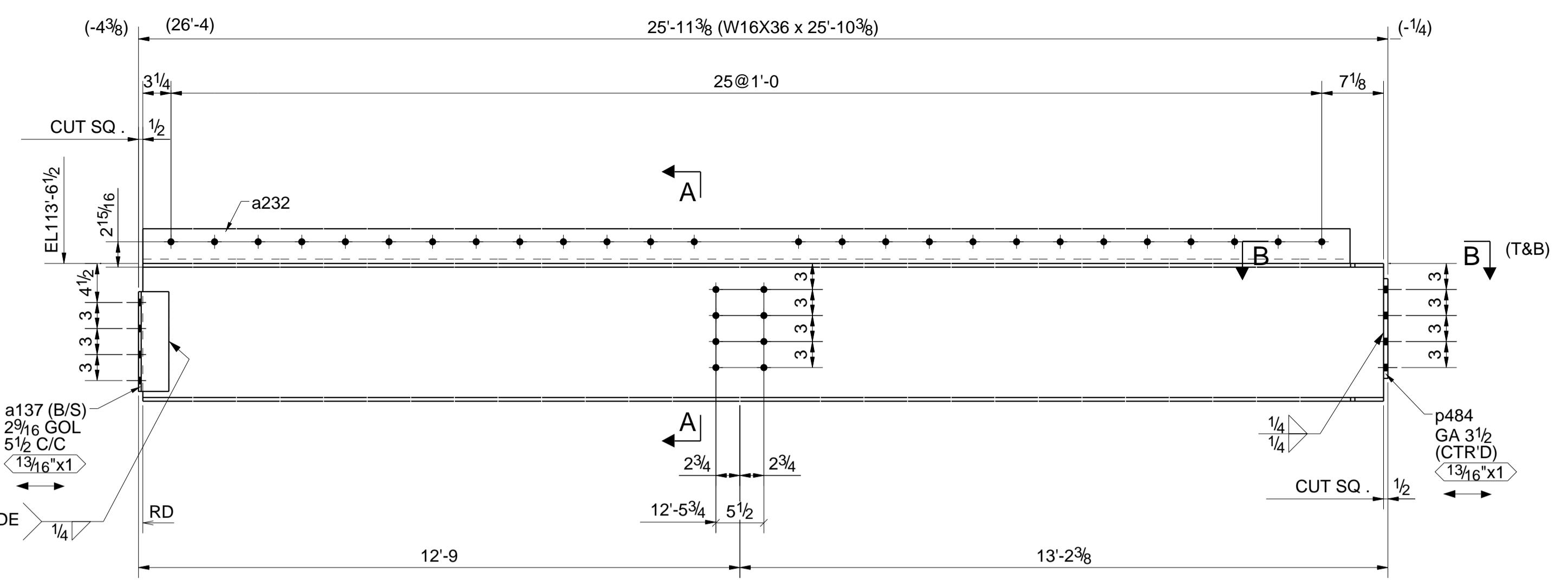
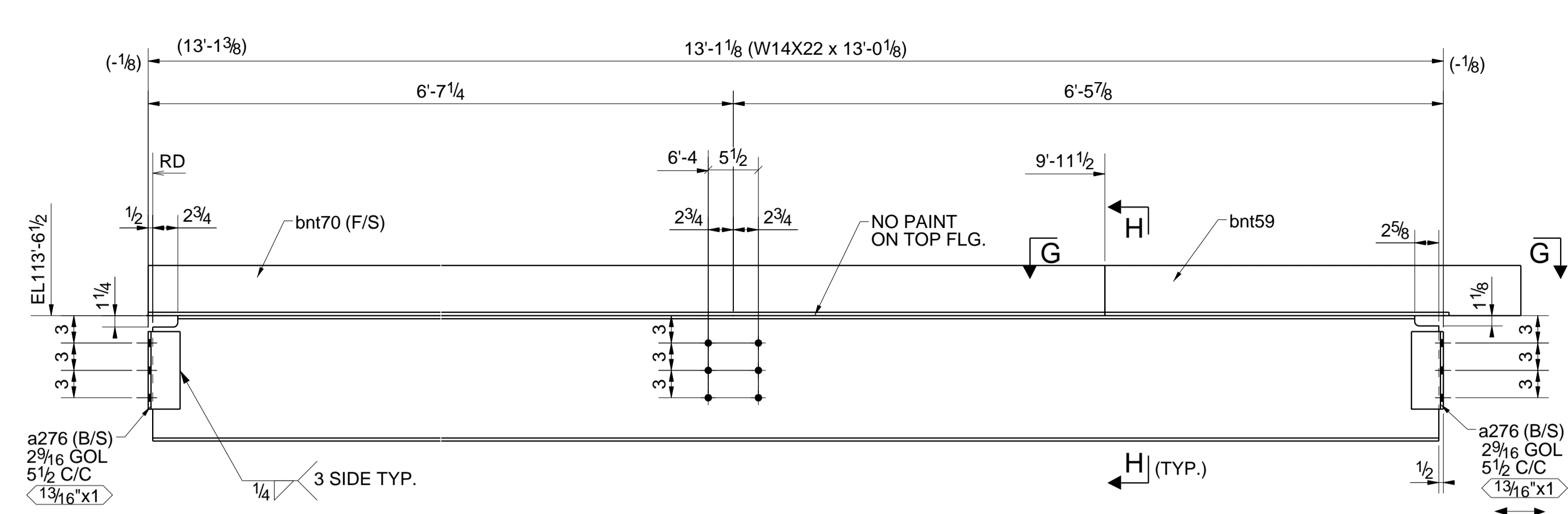


BILL OF MATERIAL					
QUAN	MARK	FAB MARK	DESCRIPTION	LENGTH	QS REF./REMARK
1		123B1	W16X36	25'-10 3/8"	(A992)
2	a137		L4X3-1/2X5/16	0'-11 1/2"	
1	a232		L8X4X1/2	25'-6 1/2"	
1	p484		PL1/2"X6"	0'-11 1/2"	
1		123B2	W14X22	15'-10 9/16"	(A992)
1	a233		L8X4X1/2	15'-2 7/8"	
1	p146		PL3/4"X14 1/4"	1'-9"	
1	p147		PL3/4"X14 1/4"	1'-8 15/16"	
1	p480		PL1/2"X6"	2'-3 1/2"	
1	p481		PL1/2"X6"	2'-1 1/2"	
1		123B3	W14X22	16'-0"	(A992)
2	a276		L4X3-1/2X5/16	0'-8 1/2"	
1	bnt24		PL3/8"X7 3/4"	6'-5 3/4"	
1	bnt151		PL3/8"X7 3/4"	9'-8 7/8"	
1		123B4	W14X22	13'-0 1/8"	(A992)
4	a276		L4X3-1/2X5/16	0'-8 1/2"	
1	bnt59		PL3/8"X8 1/2"	3'-9 5/8"	
1	bnt70		PL3/8"X7 3/4"	10'-0"	
1		123B5	W12X14	15'-10 9/16"	(A992)
4	a276		L4X3-1/2X5/16	0'-8 1/2"	
1	bnt42		PL3/8"X8 1/4"	6'-4 3/4"	
1	bnt128		PL3/8"X8 1/4"	10'-0"	
16	m150		STUD_1/2-DIA	0'-5"	
9			BOLT 3/4"DIA A325 TC 1 3/4		Site
32			BOLT 3/4"DIA A325 TC 2"		Site
22			BOLT 3/4"DIA A325 TC 2 1/4		Site
6			BOLT 3/4"DIA A325 TC 2 3/4		Site
41			THREADED ROD 5/8X6"	ASTM A193, GRADE B7	Site



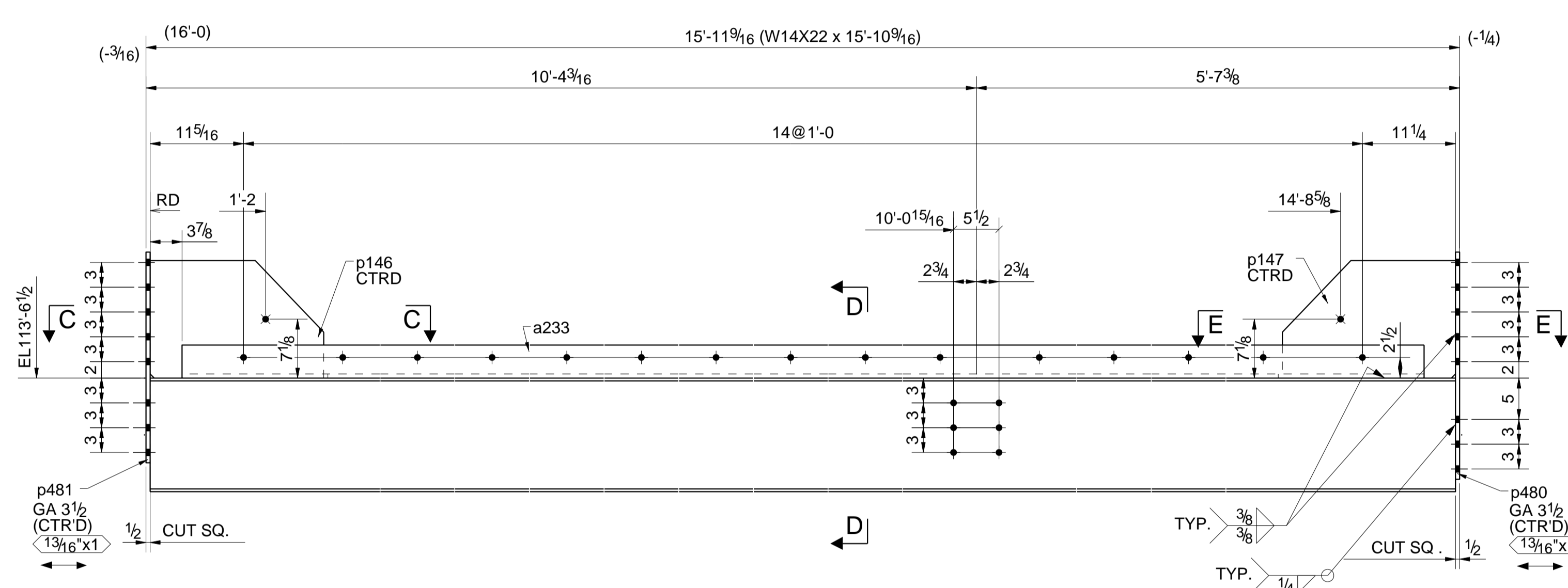
ONE - BEAM - 123B1

SEQ	QTY	DESCRIPTION
1	1	1
26		THREADED ROD 5/8X6"
6		BOLT 3/4"DIA A325 TC 2 3/4
10		BOLT 3/4"DIA A325 TC 2 1/4



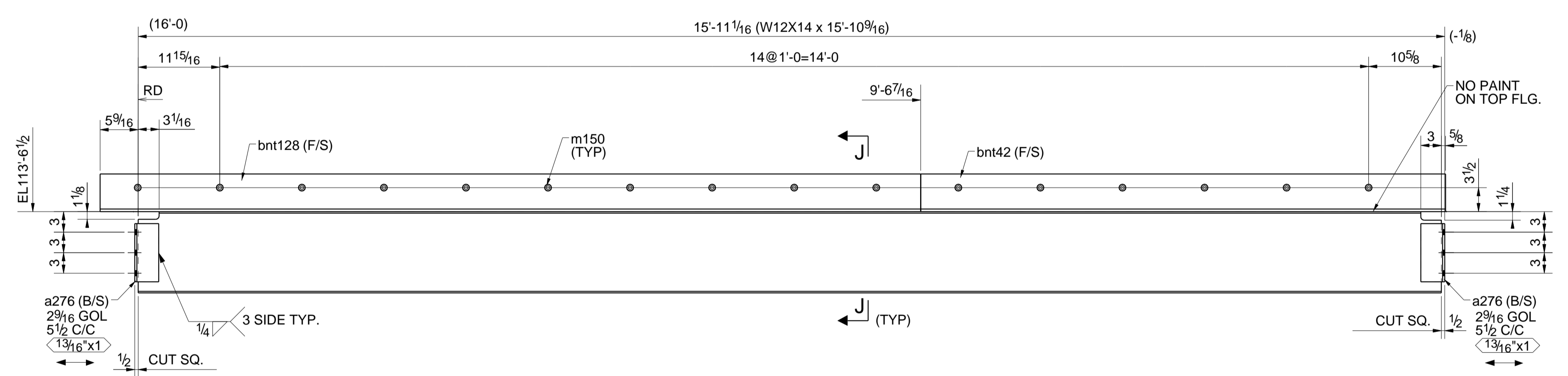
ONE - BEAM - 123B4

SEQ	QTY	DESCRIPTION
1	1	1
6		BOLT 3/4"DIA A325 TC 1 3/4



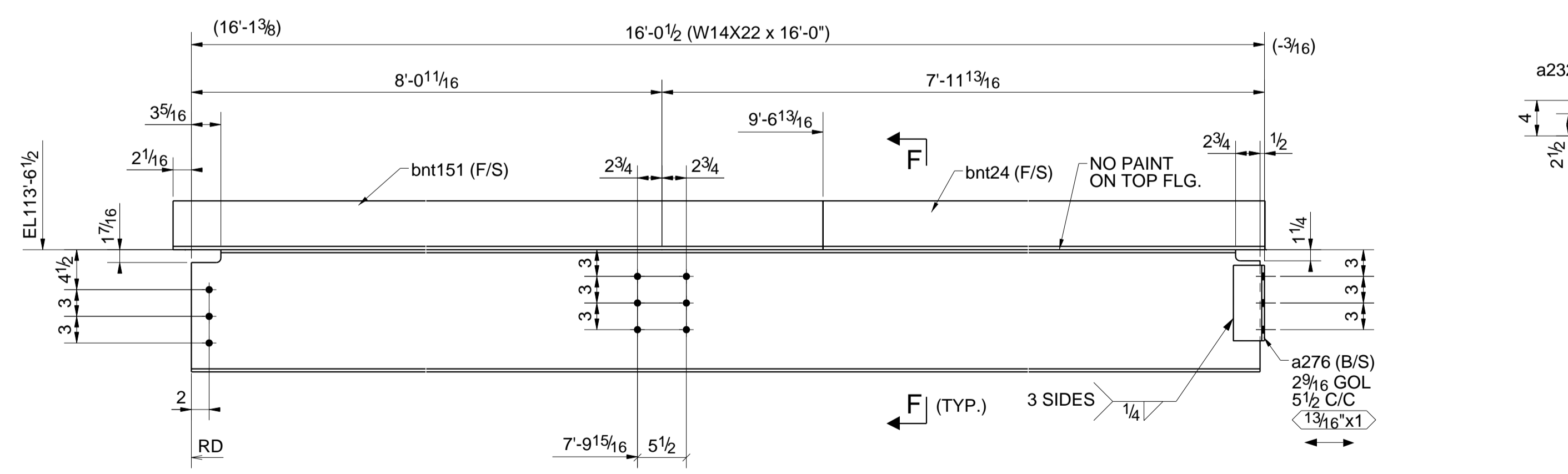
ONE - BEAM - 123B2

SEQ	QTY	DESCRIPTION
1	1	1
15		THREADED ROD 5/8X6"
26		BOLT 3/4"DIA A325 TC 2"



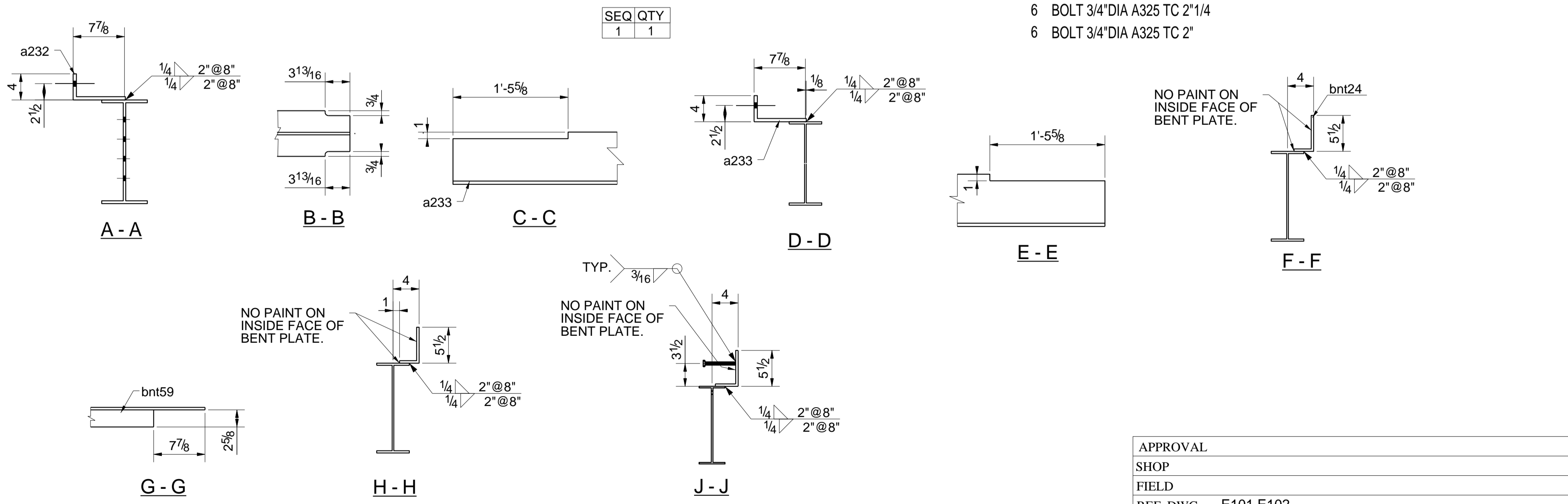
ONE - BEAM - 123B5

SEQ	QTY	DESCRIPTION
1	1	1
6		BOLT 3/4"DIA A325 TC 2 1/4
6		BOLT 3/4"DIA A325 TC 2"



ONE - BEAM - 123B3

SEQ	QTY	DESCRIPTION
1	1	1
6		BOLT 3/4"DIA A325 TC 2 1/4
3		BOLT 3/4"DIA A325 TC 1 3/4



APPROVAL	
SHOP	
FIELD	
REF. DWG.	E101, E102

	REVISIONS	<ul style="list-style-type: none"> 1 For Fabrication 09/11/2013 	HOLES: 13/16 Ø UNO EDGE DISTANCE: AS NOTED WELD ROD: E70XX STEEL: A36 (U.N.O)	PREP: NO PAINT WITHIN PAINT: 1-S/C PRIMER PER SSPC-25 DPT:	DRAWN BY:	PREP:	ARCHITECT: EOP ENGINEER: MASON & HANGER CONTRACTOR: D.W.WILBURN	JOB ORDER NO.:
					DATE: 07/12/2013			
					CHECKED BY:			
					DATE: 09/11/2013			

BEAM DETAILS

DRAWING NO.	REV.
123	1