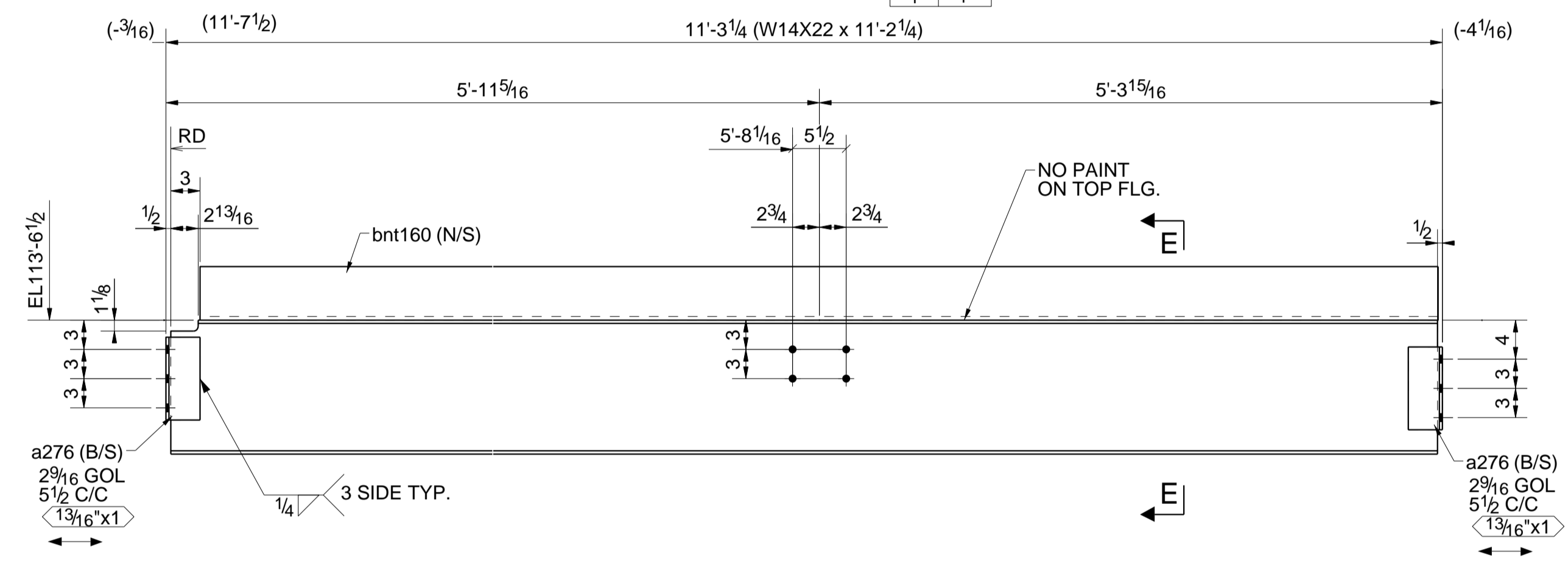


ONE - BEAM - 134B1

SEQ	QTY
1	1

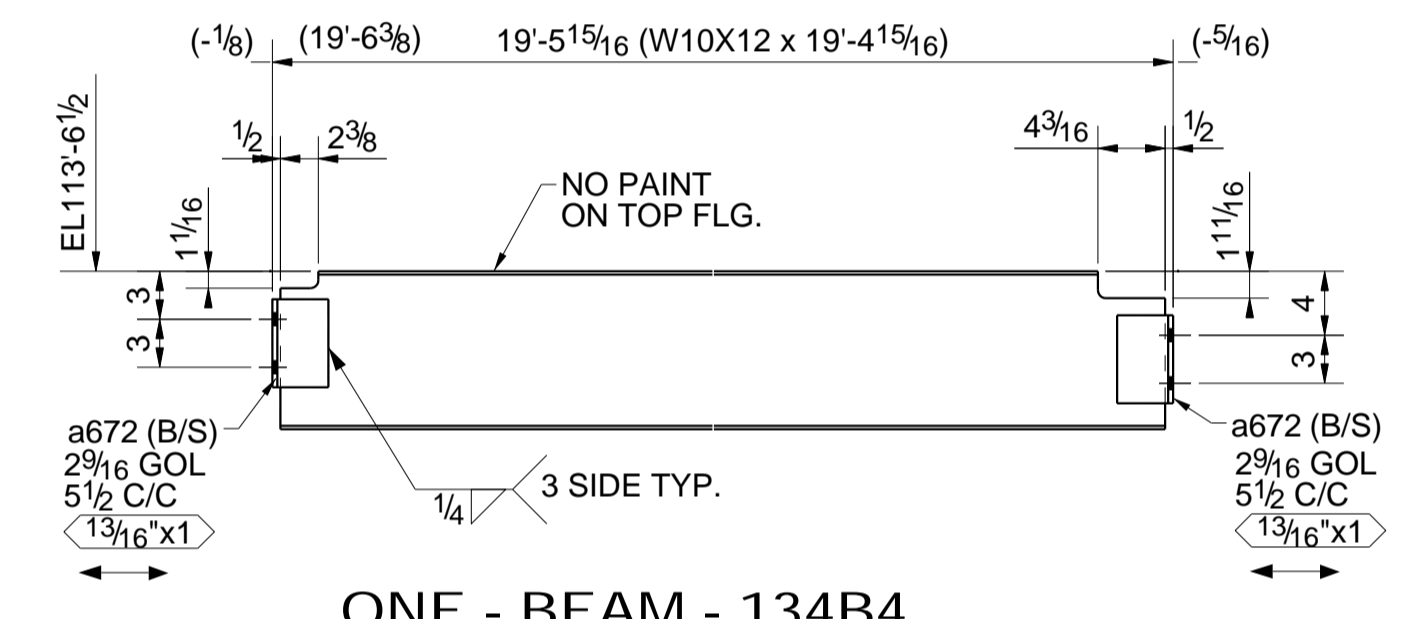
14 BOLT 3/4"DIA A325 TC 2"



ONE - BEAM - 134B3

SEQ	QTY
1	1

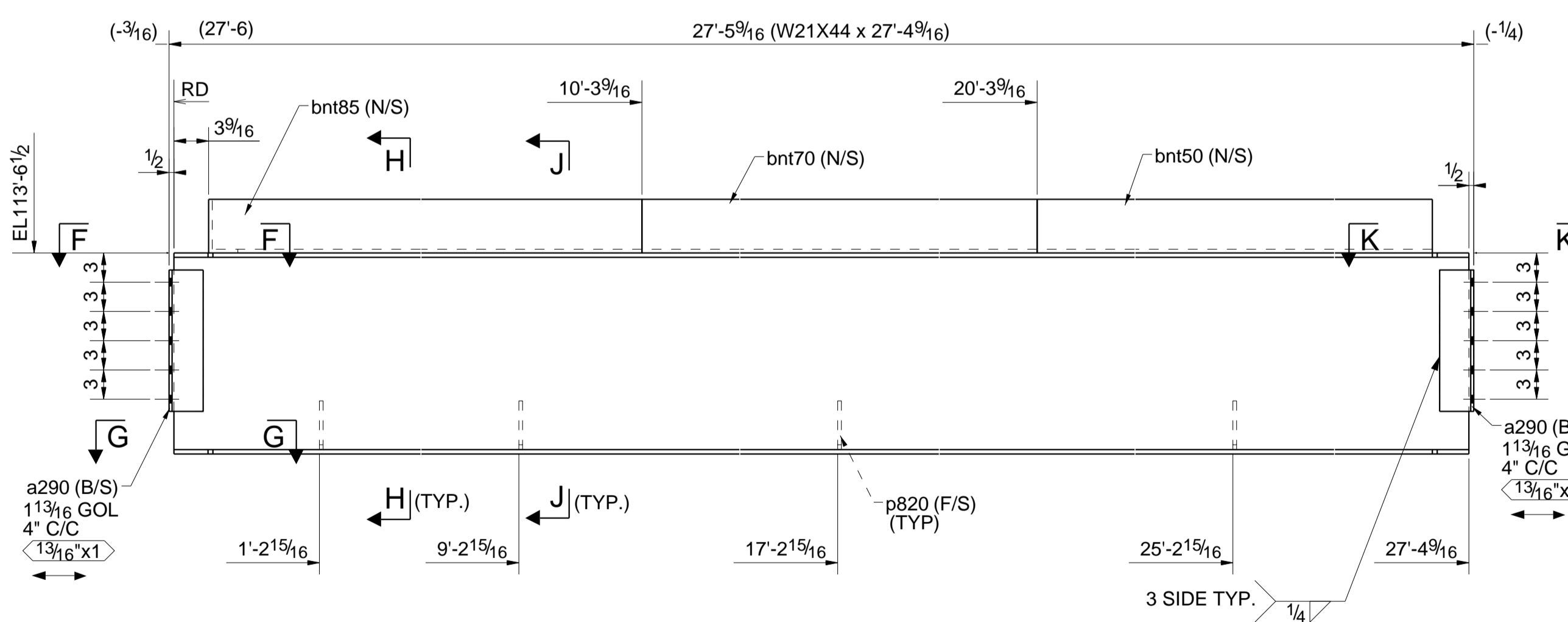
12 BOLT 3/4"DIA A325 TC 2"



ONE - BEAM - 134B4

SEQ	QTY
1	1

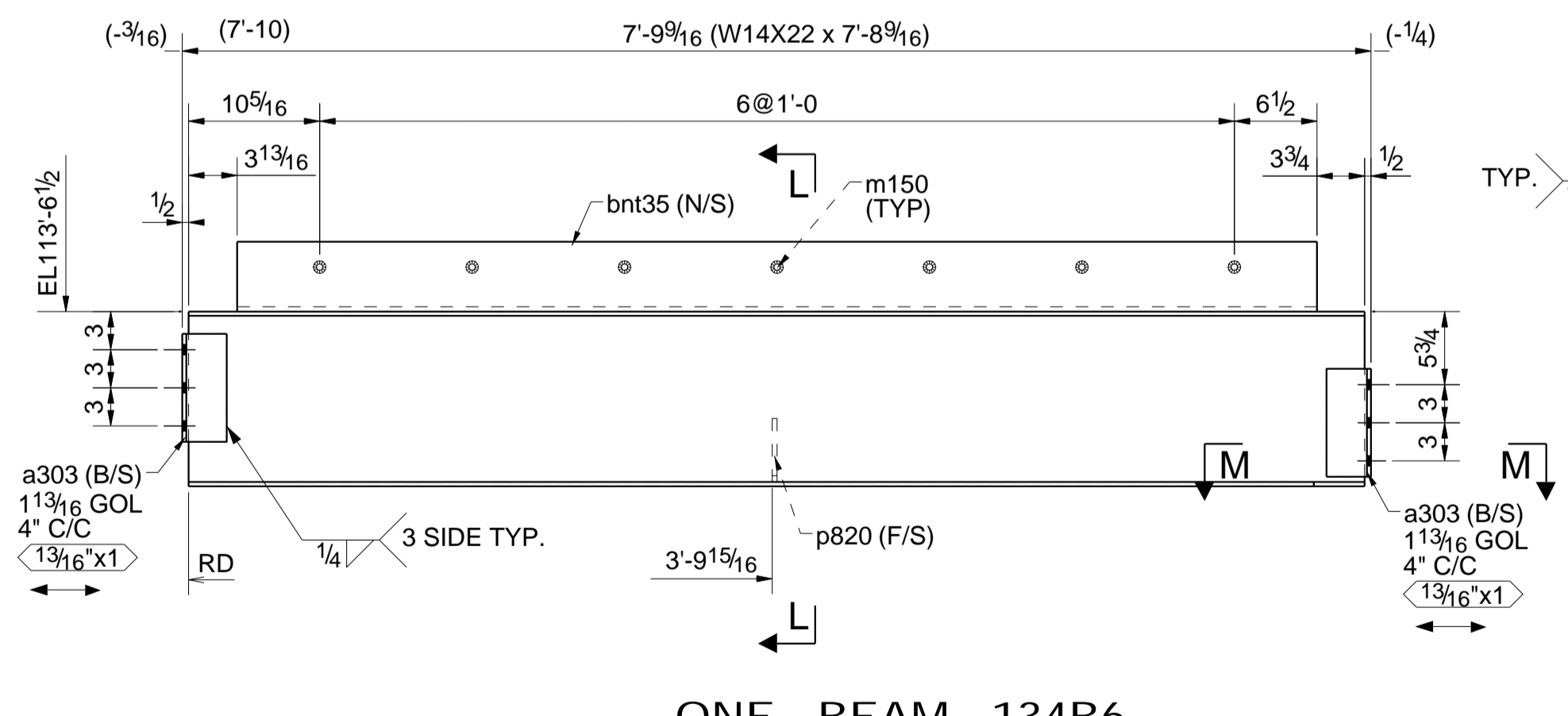
4 BOLT 3/4"DIA A325 TC 2"  
4 BOLT 3/4"DIA A325 TC 1 3/4"



ONE - BEAM - 134B5

SEQ	QTY
1	1

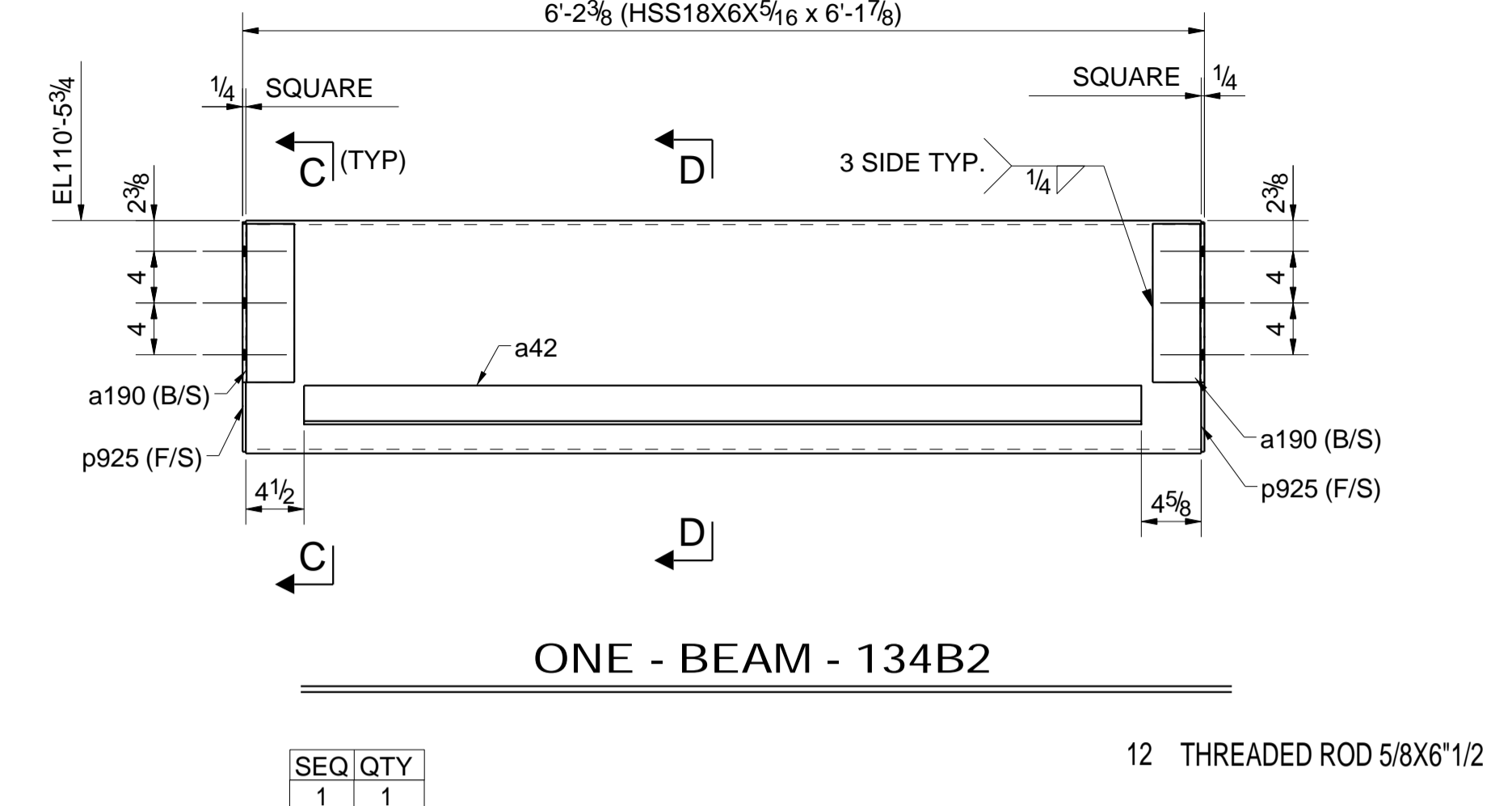
4 BOLT 3/4"DIA A325 TC 2 1/4  
6 BOLT 3/4"DIA A325 TC 2 1/2



ONE - BEAM - 134B6

SEQ	QTY
1	1

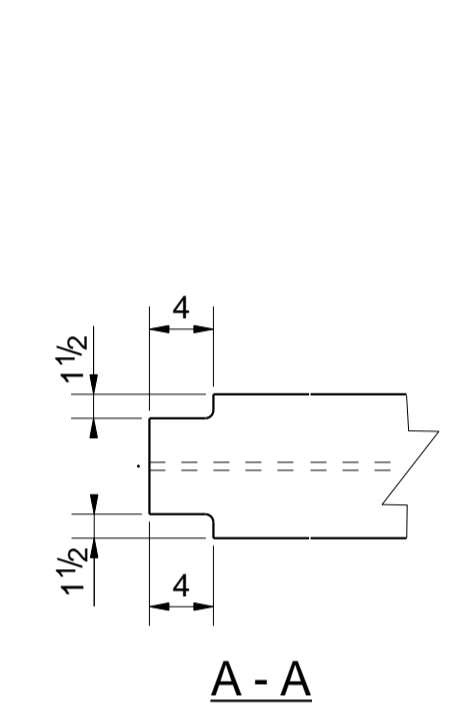
2 BOLT 3/4"DIA A325 TC 2 1/4  
4 BOLT 3/4"DIA A325 TC 2 1/2



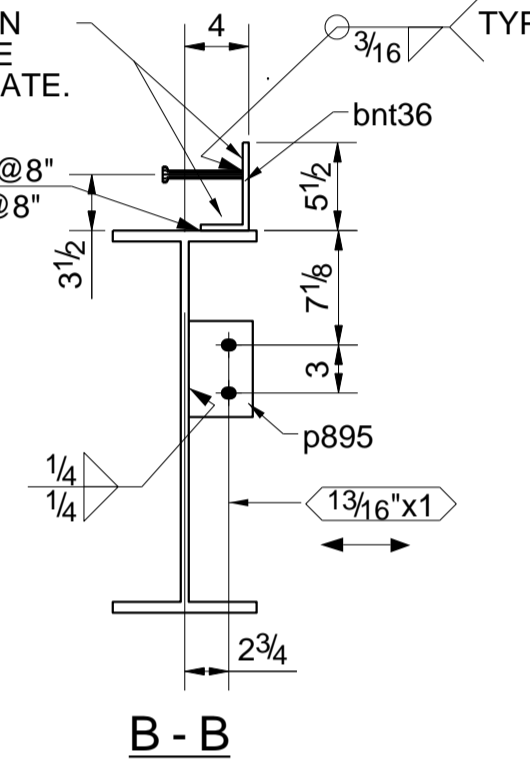
ONE - BEAM - 134B2

SEQ	QTY
1	1

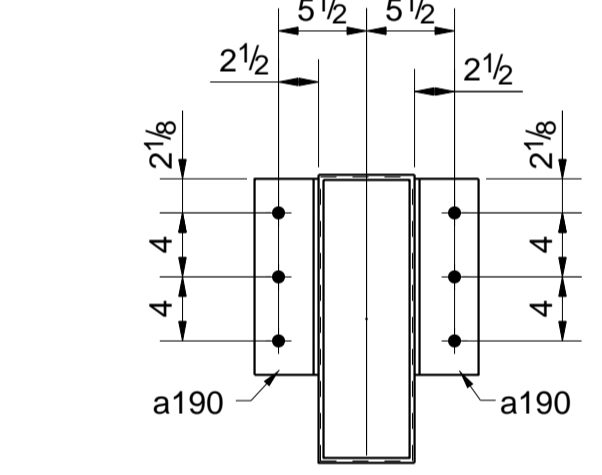
12 THREADED ROD 5/8X6 1/2



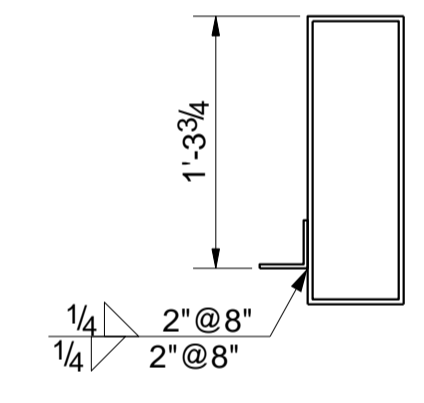
A - A



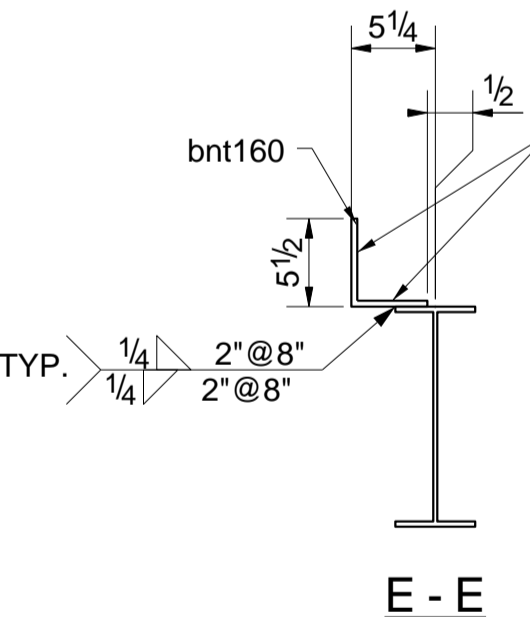
B - B



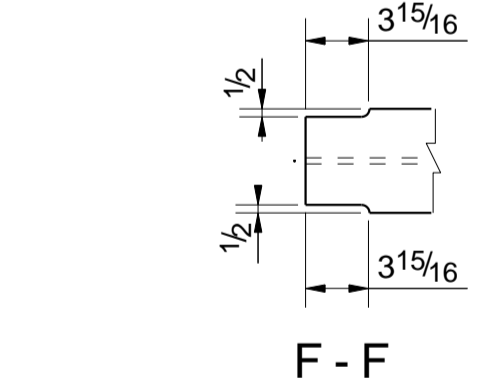
C - C



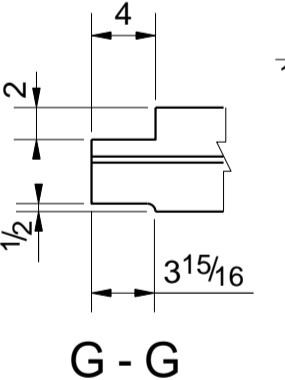
D - D



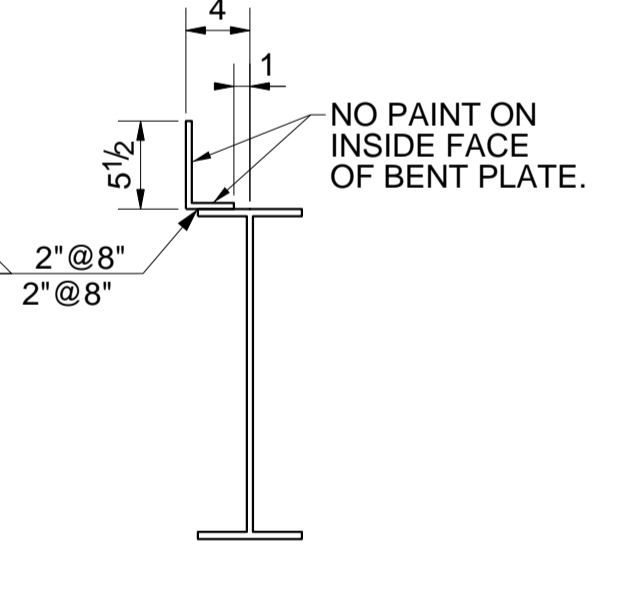
E - E



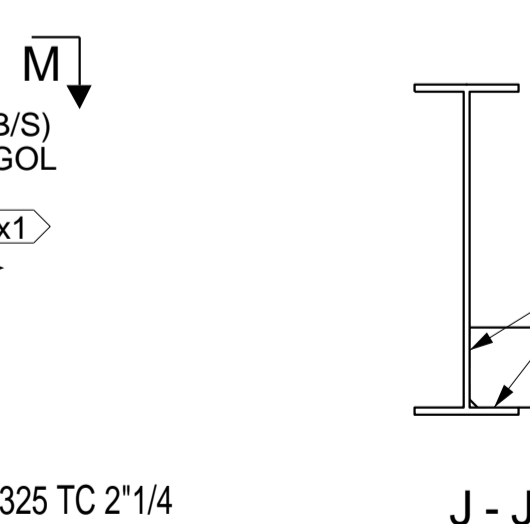
F - F



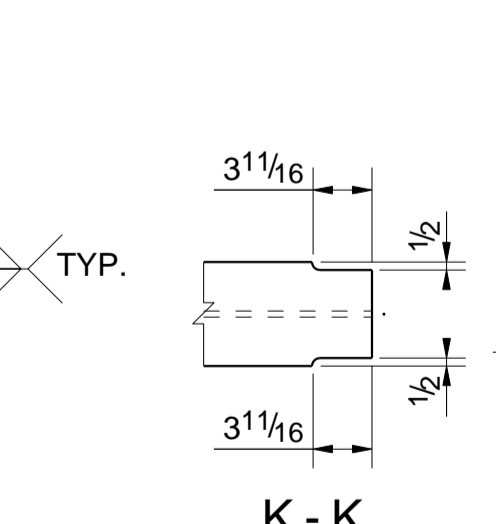
G - G



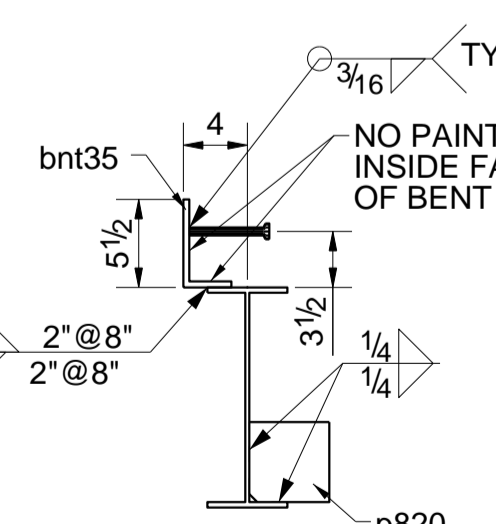
H - H



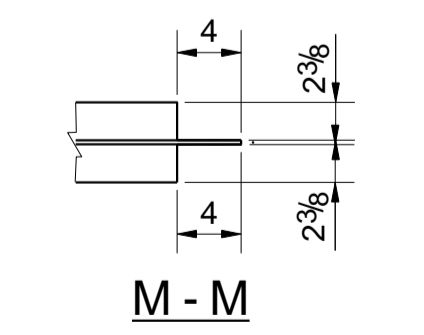
J - J



K - K



L - L



M - M

BILL OF MATERIAL					
QUAN	MARK	FAB MARK	DESCRIPTION	LENGTH	QS REF./REMARK
1		134B1	W24X76	32'-11 1/8"	(A992)
2	a274		L4X3-1/2X5/16	1'-5 1/2"	
2	a291		L3-1/2X3X5/16	1'-5 1/2"	
1	bnt36		PL3/8"X7 3/4"	10'-11 1/2"	
7	m151		STUD_1/2-DIA	0'-5"	
2	p895		PL1/2"X4"	0'-6"	
1		134B2	HSS18X6X5/16	6'-1 7/8"	(A500-GR.B)
1	a42		L3X3X1/4	5'-4 3/4"	
4	a190		L4X4X5/16	1'-0 1/4"	
2	p825		PL1/4"X5 3/4"	1'-5 3/4"	
1		134B3	W14X22	11'-2 1/4"	(A992)
4	a276		L4X3-1/2X5/16	0'-8 1/2"	
1	bnt160		PL3/8"X9 1/2"	10'-11 5/16"	
1		134B4	W10X12	19'-4 15/16"	(A992)
4	a672		L4X3-1/2X5/16	0'-5 1/2"	
1		134B5	W21X44	27'-4 9/16"	(A992)
4	a290		L3-1/2X3X5/16	1'-2 1/2"	
1	bnt50		PL3/8"X7 3/4"	6'-9 1/4"	
1	bnt70		PL3/8"X7 3/4"	10'-0"	
1	bnt85		PL3/8"X7 3/4"	10'-0"	
4	p820		PL3/8"X5"	0'-5"	
1		134B6	W14X22	7'-8 9/16"	(A992)
4	a303		L3-1/2X3X5/16	0'-8 1/2"	
1	bnt35		PL3/8"X7 3/4"	7'-1"	
7	m150		STUD_1/2-DIA	0'-5"	
1	p820		PL3/8"X5"	0'-5"	
4			BOLT 3/4"DIA A325 TC 1 3/4		Site
30			BOLT 3/4"DIA A325 TC 2"		Site
10			BOLT 3/4"DIA A325 TC 2 1/2		Site
6			BOLT 3/4"DIA A325 TC 2 1/4		Site
12			THREADED ROD 5/8X6 1/2		ASTM A193, GRADE B7 Site

APPROVAL  
SHOP  
FIELD  
REF. DWG. E101,E102



REVISIONS	ROLES	PREP	DRAWN BY
△	13/16 Ø UNO		N.A
△	EDGE DISTANCE	PAINT	DATE
△	AS NOTED	1-S/C PRIMER PER SSPC-25	07/12/2013
△	E70XX		CHECKED BY
△			S.B
1	A36 (U.N.O)	NO PAINT WITHIN	DATE
			09/09/2013

For Fabrication	09/11/2013
-----------------	------------

BEAM DETAILS

JOB ORDER NO.	REV.
	134